

SOLOMON ISLANDS LIBRARY



PROJECT MANAGER

TIMBER RESTORATION SYSTEMS PTY LTD
C/O Stephen Richards
P.O. Box 277 Seymour, VIC 3661 Australia
tel: (03) 5792 1099
fax: (05) 5799 0549
email: info@timberresearchsystems.com.au
www.timberresearchsystems.com.au

ENGINEER OF RECORD (EOR)

WOOD RESEARCH AND DEVELOPMENT
C/O Dan Tingley PH.D., P.ENG. (CANADA), MIEAUST, CPENG, RPEQ
RPEQ #11561
ENG. AU. Contact ID# 4001959
P.O. Box 70
10476 Sunnyside Rd. SE
Jefferson, Or. 97352 USA
tel: 541 752 0188
fax: 503 385 8493
email: info@woodrandd.com



DAN TINGLEY
MIEAust CPEng
#4001959
Dan Tingley

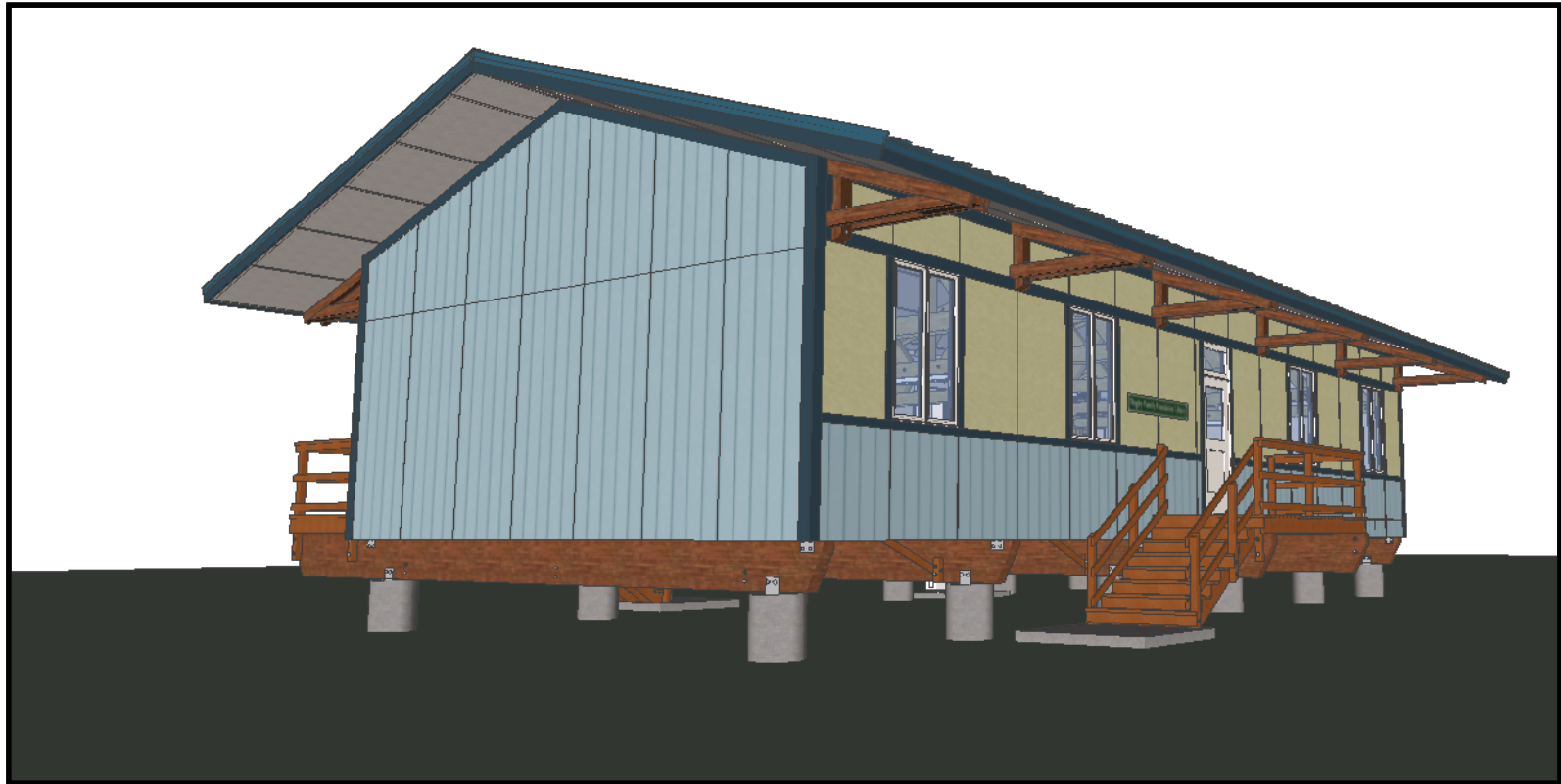
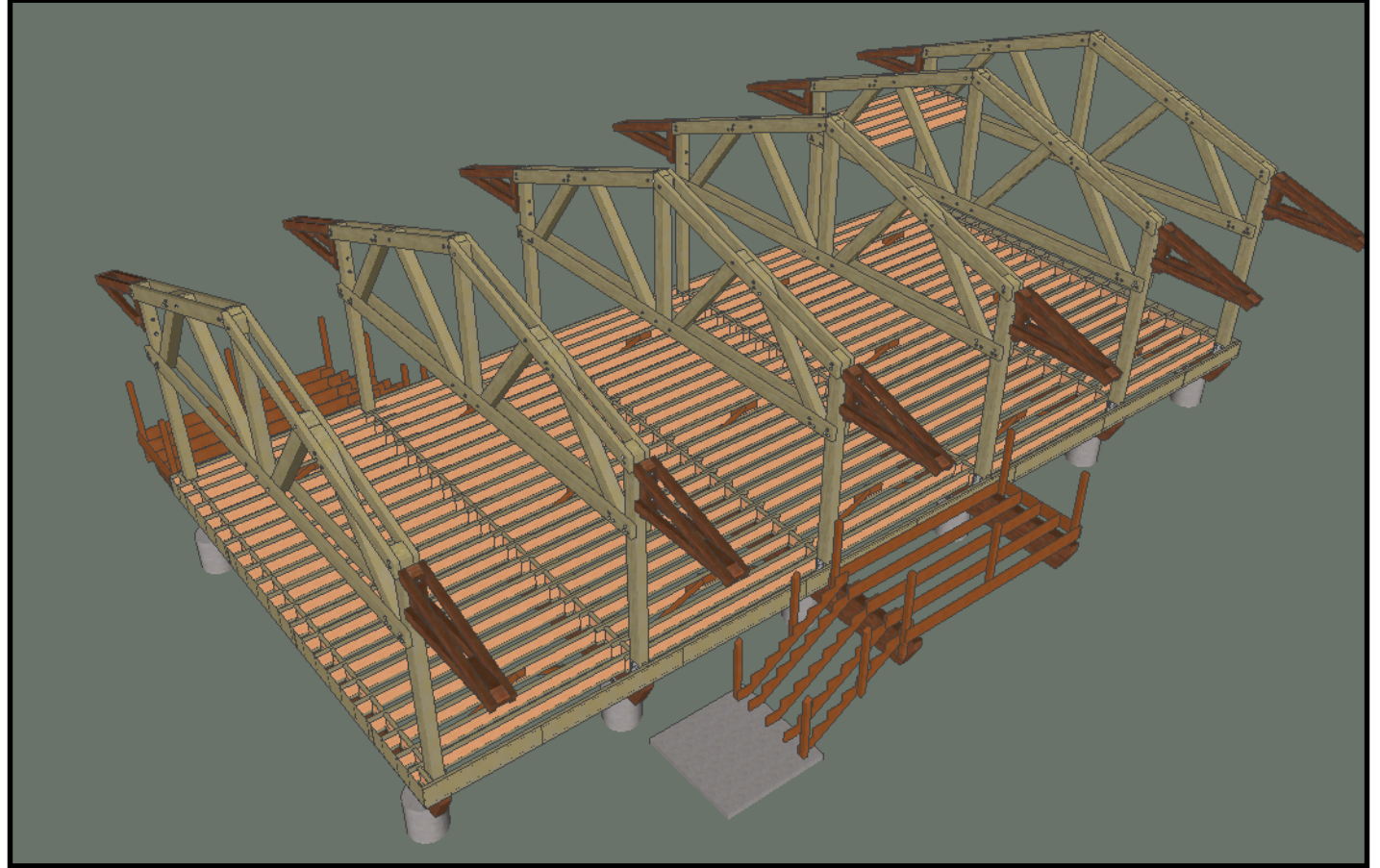
PREPARED FOR:
TINGLEY FAMILY FOUNDATION

TINGLEY FAMILY FOUNDATION LIBRARY
KIA VILLAGE, SOLOMON ISLANDS

| |
|--|
| REV: 6 MAR 2015 |
| REV: 25 FEB 2016 |
| REV: 20 OCT 2016 - ISSUED FOR CONSTRUCTION |
| REV: |
| REV: |
| REV: |
| DRAWN BY: CAL DATE: 27 JAN 2015 |

COVER SHEET

| |
|---------------|
| DRAWING # |
| 0.0 |
| SHEET # |
| 1 OF 26 |
| PROJECT #8514 |



DAN TINGLEY
MIEAust CPEng
#4001959
Dan Tingley

PREPARED FOR:
TINGLEY FAMILY FOUNDATION

TINGLEY FAMILY FOUNDATION LIBRARY KIA VILLAGE, SOLOMON ISLANDS

| | |
|--|-------------------|
| REV: 6 MAR 2015 | |
| REV: 25 FEB 2016 | |
| REV: 20 OCT 2016 - ISSUED FOR CONSTRUCTION | |
| REV: | |
| REV: | |
| REV: | |
| DRAWN BY: CAL | DATE: 27 JAN 2015 |

RENDERINGS

DRAWING #
0.1
SHEET #
2 OF 26
PROJECT #8514



DAN TINGLEY
MIEAust CPEng
#4001959
Dan Tingley

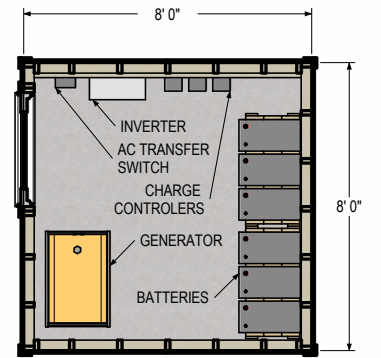
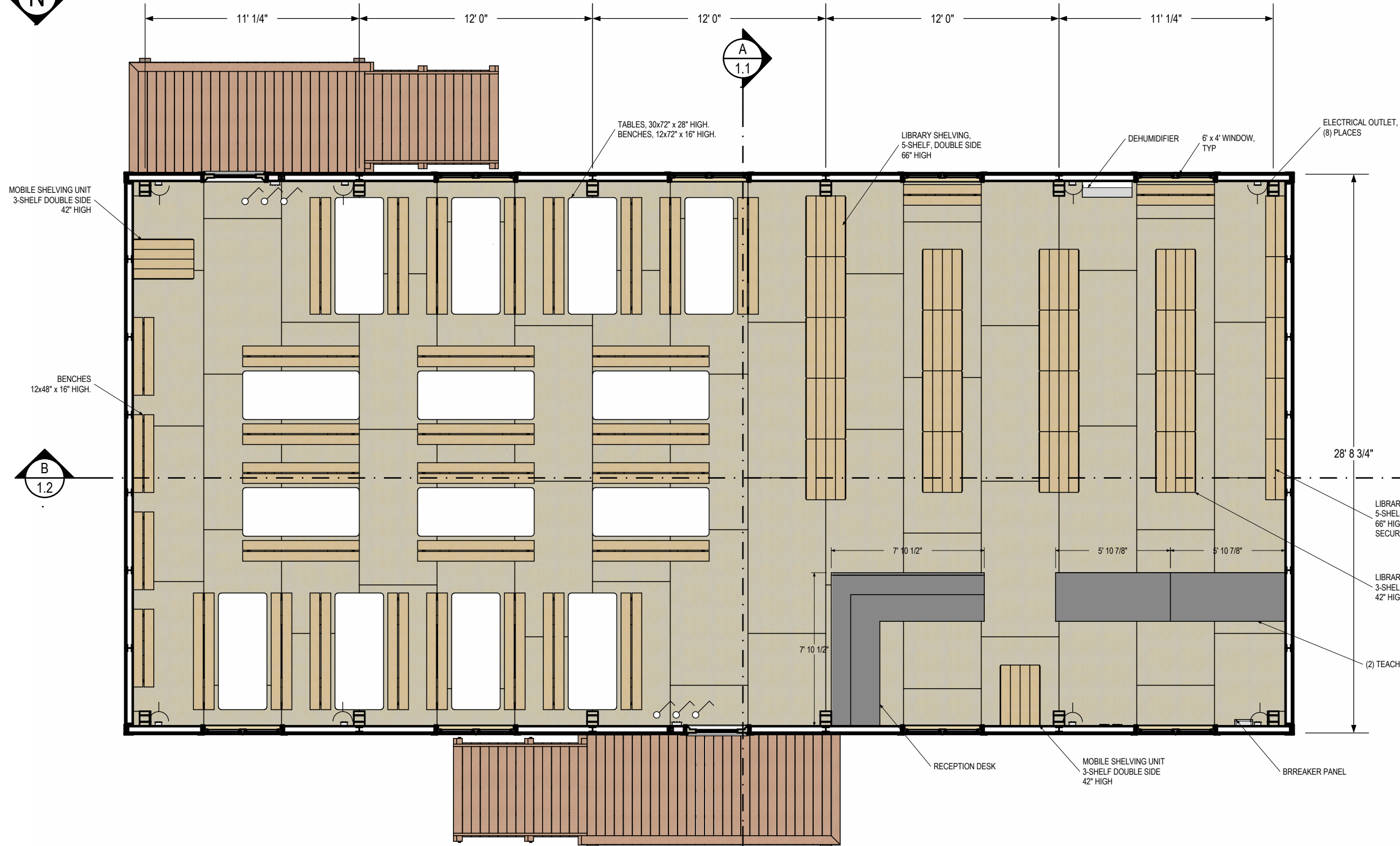
PREPARED FOR:
TINGLEY FAMILY FOUNDATION

TINGLEY FAMILY FOUNDATION LIBRARY KIA VILLAGE, SOLOMON ISLANDS

| | |
|--|-------------------|
| REV: 6 MAR 2015 | |
| REV: 25 FEB 2016 | |
| REV: 20 OCT 2016 - ISSUED FOR CONSTRUCTION | |
| REV: | |
| REV: | |
| REV: | |
| DRAWN BY: CAL | DATE: 27 JAN 2015 |

RENDERINGS

DRAWING #
0.2
SHEET #
3 of 26
PROJECT #8514



FLOOR PLAN
3/16" = 1'-0"



DAN TINGLEY
MIEAust CPEng
#4001959
Dan Tingley

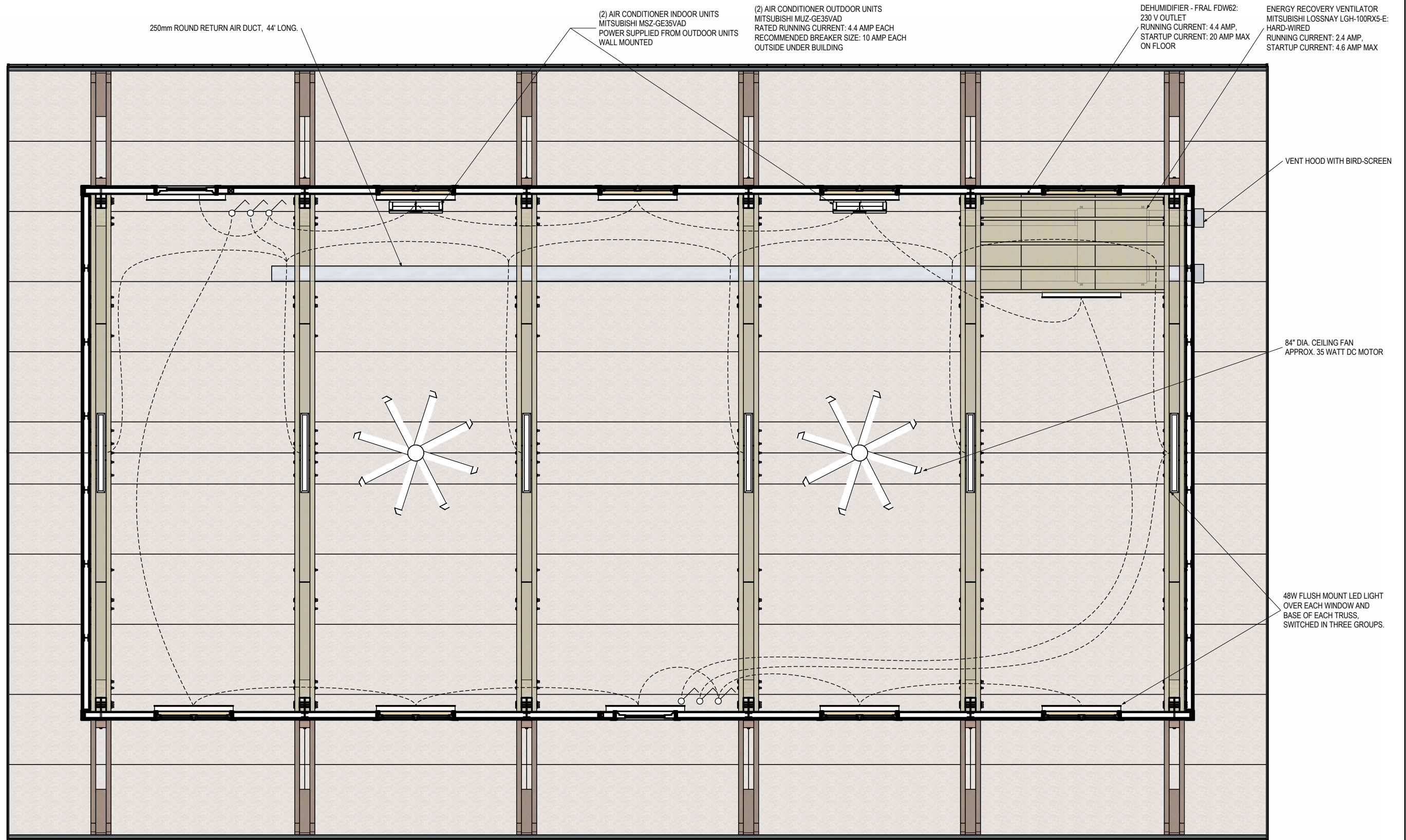
PREPARED FOR:
TINGLEY FAMILY FOUNDATION

TINGLEY FAMILY FOUNDATION LIBRARY
KIA VILLAGE, SOLOMON ISLANDS

REV: 6 MAR 2015
REV: 25 FEB 2016
REV: 20 OCT 2016 - ISSUED FOR CONSTRUCTION
REV:
REV:
REV:
DRAWN BY: CAL DATE: 27 JAN 2015

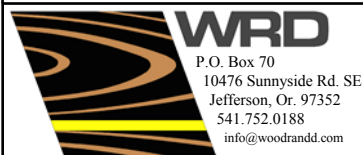
FLOOR PLAN

DRAWING #
1.0
SHEET #
4 OF 26
PROJECT #8514



REFLECTED CEILING PLAN

3/16" = 1'-0"



DAN TINGLEY
MIEAust CPEng
#4001959

Dan Tingley

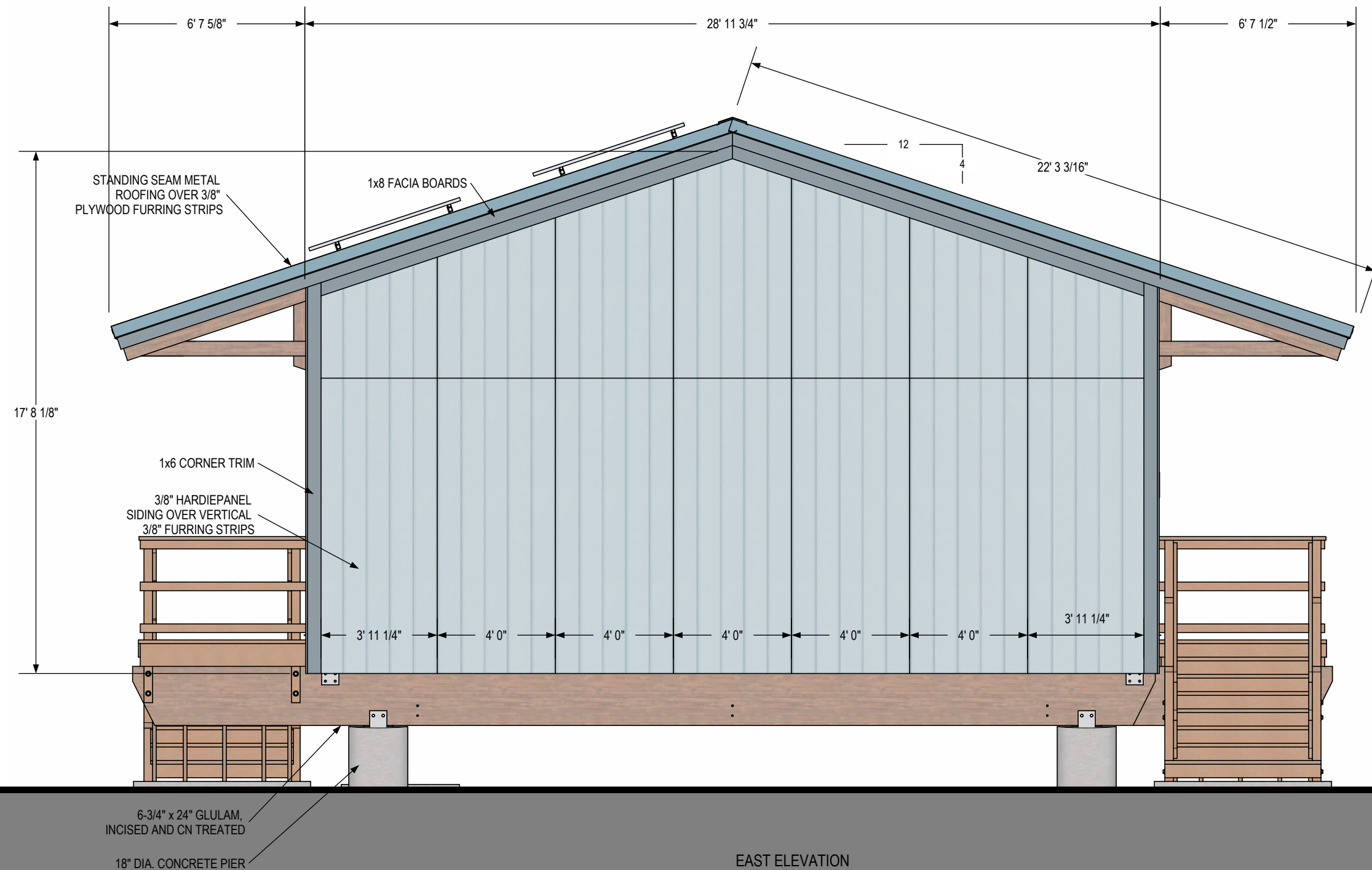
PREPARED FOR:
TINGLEY FAMILY FOUNDATION

TINGLEY FAMILY FOUNDATION LIBRARY
KIA VILLAGE, SOLOMON ISLANDS

REV: 6 MAR 2015
REV: 25 FEB 2016
REV: 20 OCT 2016 - ISSUED FOR CONSTRUCTION
REV:
REV:
REV:
DRAWN BY: CAL DATE: 27 JAN 2015

REFLECTED CEILING PLAN

DRAWING #
1.1
SHEET #
5 OF 26
PROJECT #8514



DAN TINGLEY
MIEAust CPEng
#4001959

PREPARED FOR:
TINGLEY FAMILY FOUNDATION

TINGLEY FAMILY FOUNDATION LIBRARY
KIA VILLAGE, SOLOMON ISLANDS

REV: 6 MAR 2015
REV: 25 FEB 2016
REV: 20 OCT 2016 - ISSUED FOR CONSTRUCTION
REV:
REV:
REV:
DRAWN BY: CAL DATE: 27 JAN 2015

ELEVATION

DRAWING #

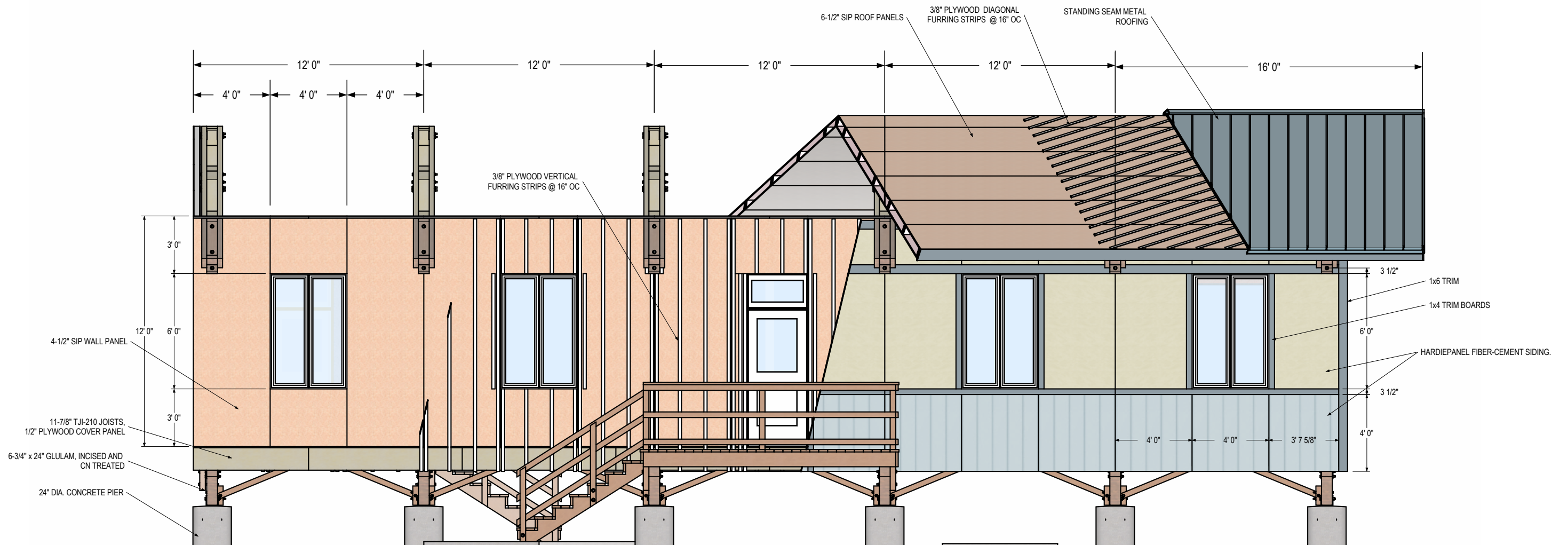
1.2

SHEET #

6 OF 26

PROJECT #8514





CUTAWAY ELEVATION
3/16" = 1'-0"



DAN TINGLEY
MIEAust CPEng
#4001959
Dan Tingley

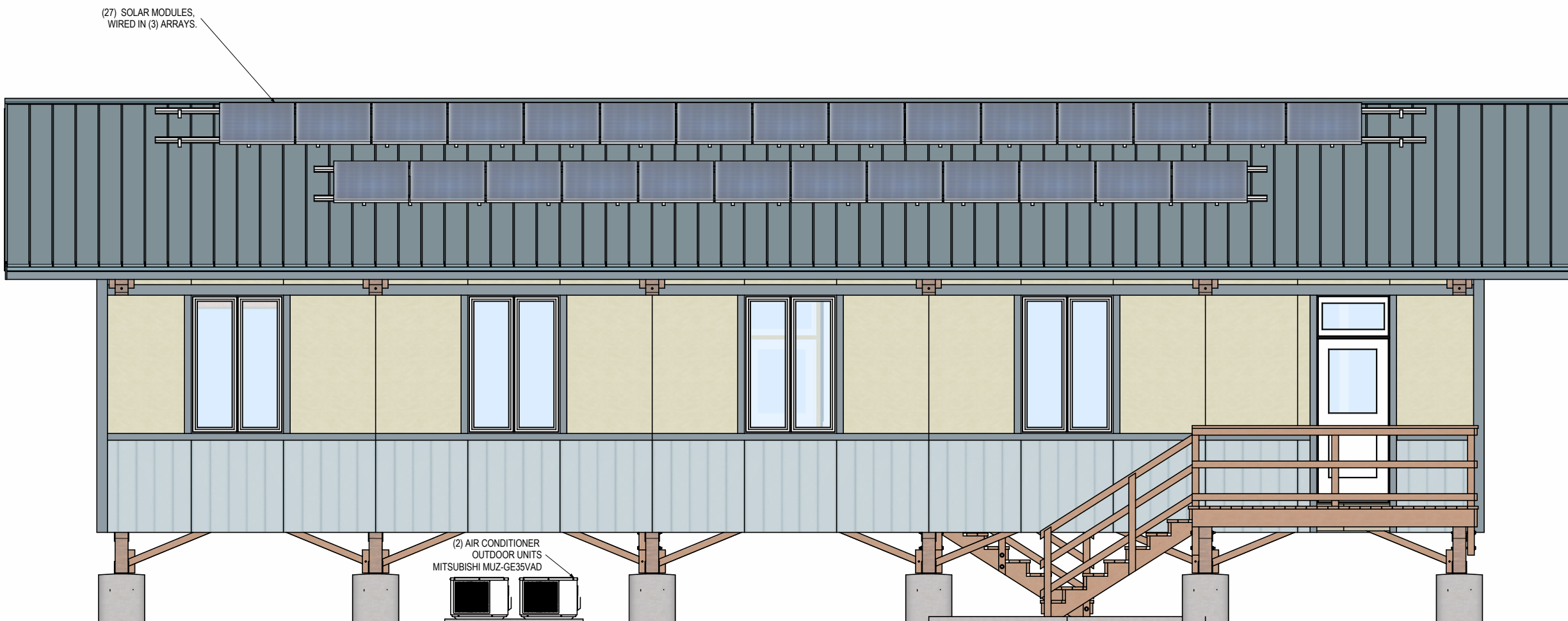
PREPARED FOR:
TINGLEY FAMILY FOUNDATION

TINGLEY FAMILY FOUNDATION LIBRARY
KIA VILLAGE, SOLOMON ISLANDS

REV: 6 MAR 2015
REV: 25 FEB 2016
REV: 20 OCT 2016 - ISSUED FOR CONSTRUCTION
REV:
REV:
REV:
DRAWN BY: CAL DATE: 27 JAN 2015

CUTAWAY ELEVATION

DRAWING #
1.4
SHEET #
8 OF 26
PROJECT #8514



NORTH ELEVATION
3/16" = 1'-0"



DAN TINGLEY
MIEAust CPEng
#4001959
Dan Tingley

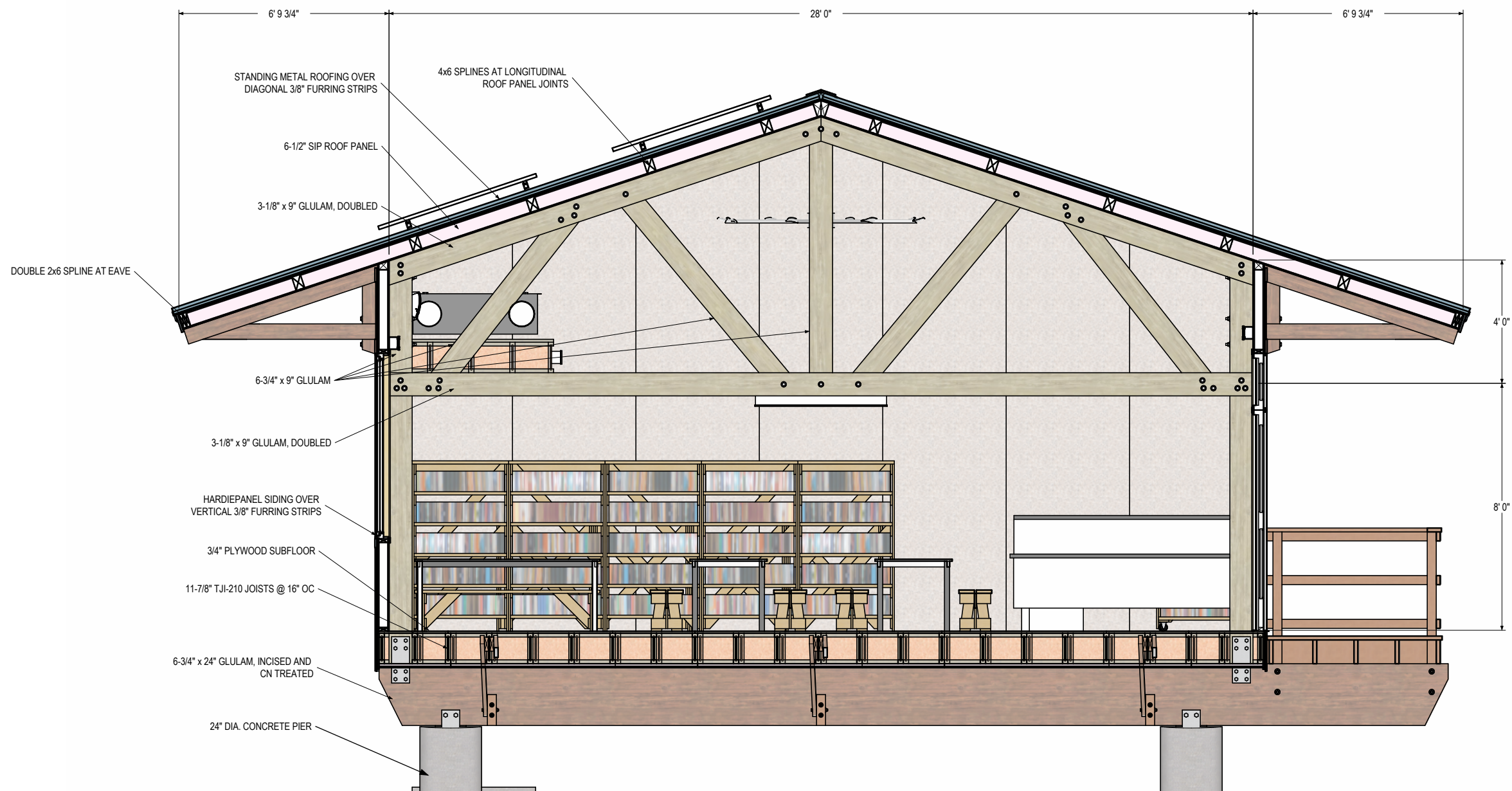
PREPARED FOR:
TINGLEY FAMILY FOUNDATION

TINGLEY FAMILY FOUNDATION LIBRARY
KIA VILLAGE, SOLOMON ISLANDS

| | |
|--|-------------------|
| REV: 6 MAR 2015 | |
| REV: 25 FEB 2016 | |
| REV: 20 OCT 2016 - ISSUED FOR CONSTRUCTION | |
| REV: | |
| REV: | |
| REV: | |
| DRAWN BY: CAL | DATE: 27 JAN 2015 |

ELEVATION

| | |
|-----------|---------|
| DRAWING # | 1.5 |
| SHEET # | 9 OF 26 |
| PROJECT # | #8514 |



A SECTION
1.0 1/4" = 1'-0"



DAN TINGLEY
MIEAust CPEng
#4001959
Dan Tingley

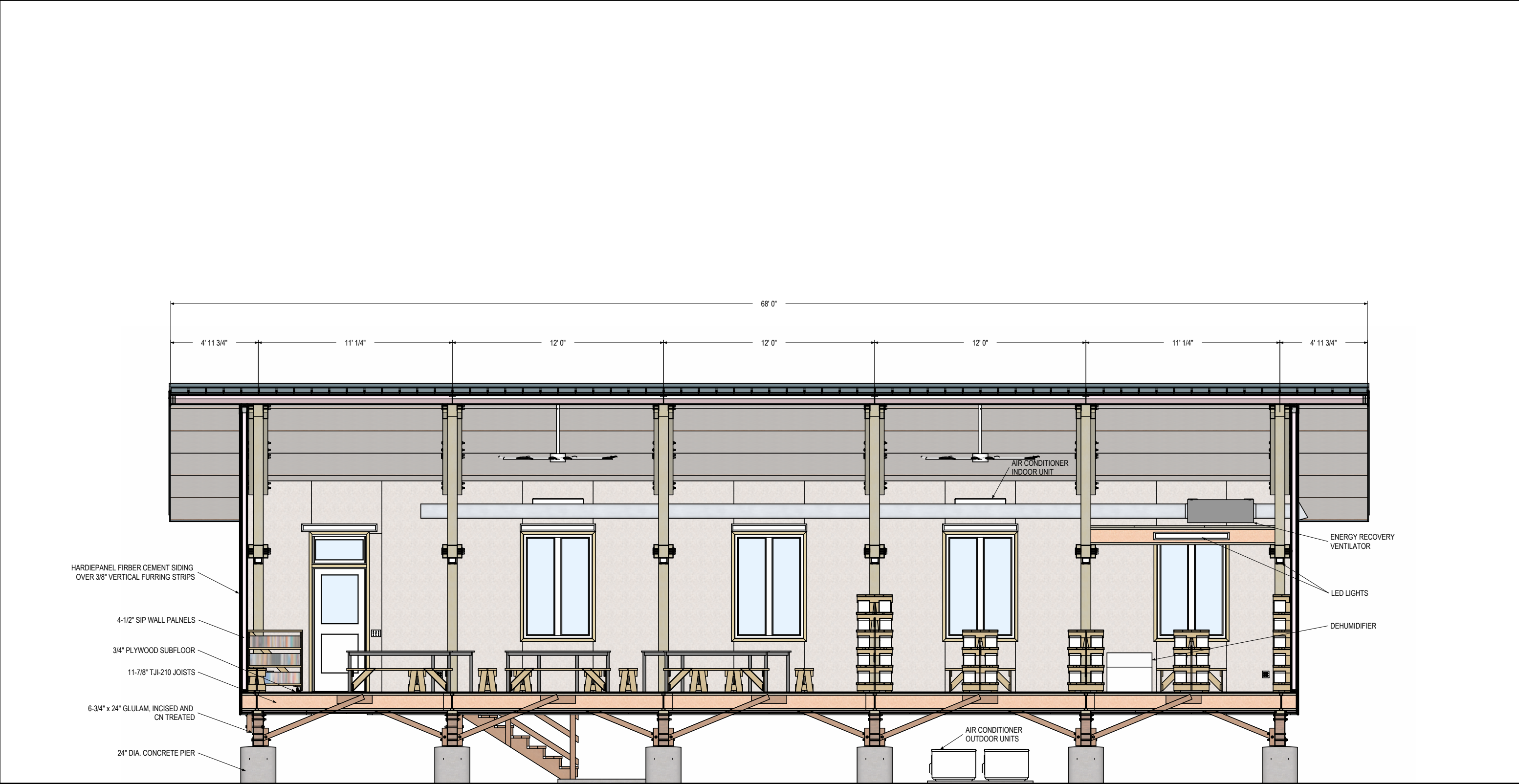
PREPARED FOR:
TINGLEY FAMILY FOUNDATION

TINGLEY FAMILY FOUNDATION LIBRARY
KIA VILLAGE, SOLOMON ISLANDS

REV: 6 MAR 2015
REV: 25 FEB 2016
REV: 20 OCT 2016 - ISSUED FOR CONSTRUCTION
REV:
REV:
REV:
DRAWN BY: CAL DATE: 27 JAN 2015

SECTION

DRAWING #
1.6
SHEET #
10 OF 26
PROJECT #8514



B SECTION
1.0 3/16" = 1'-0"



DAN TINGLEY
MIEAust CPEng
#4001959

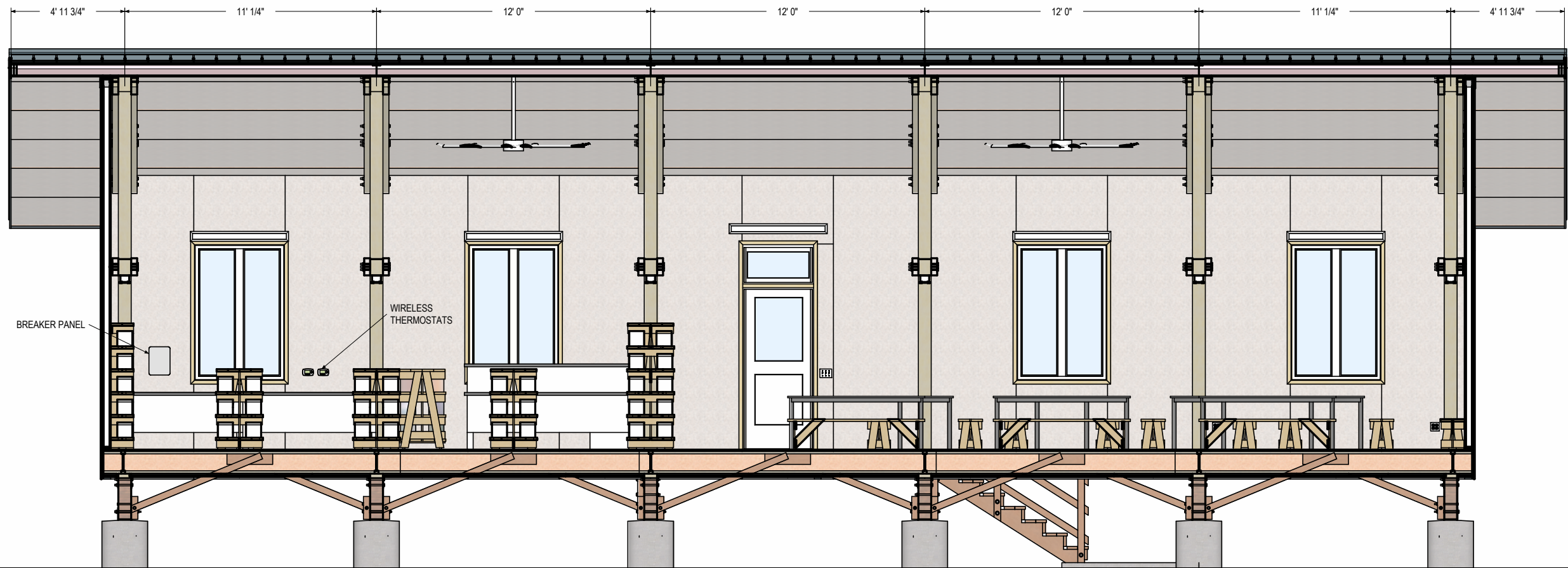
PREPARED FOR:
TINGLEY FAMILY FOUNDATION

TINGLEY FAMILY FOUNDATION LIBRARY
KIA VILLAGE, SOLOMON ISLANDS

| | |
|--|-------------------|
| REV: 6 MAR 2015 | |
| REV: 25 FEB 2016 | |
| REV: 20 OCT 2016 - ISSUED FOR CONSTRUCTION | |
| REV: | |
| REV: | |
| REV: | |
| DRAWN BY: CAL | DATE: 27 JAN 2015 |

SECTION

DRAWING #
1.7
SHEET #
11 OF 26
PROJECT #8514



B SECTION
1.0 3/16" = 1'-0"



DAN TINGLEY
MIEAust CPEng
#4001959
Dan Tingley

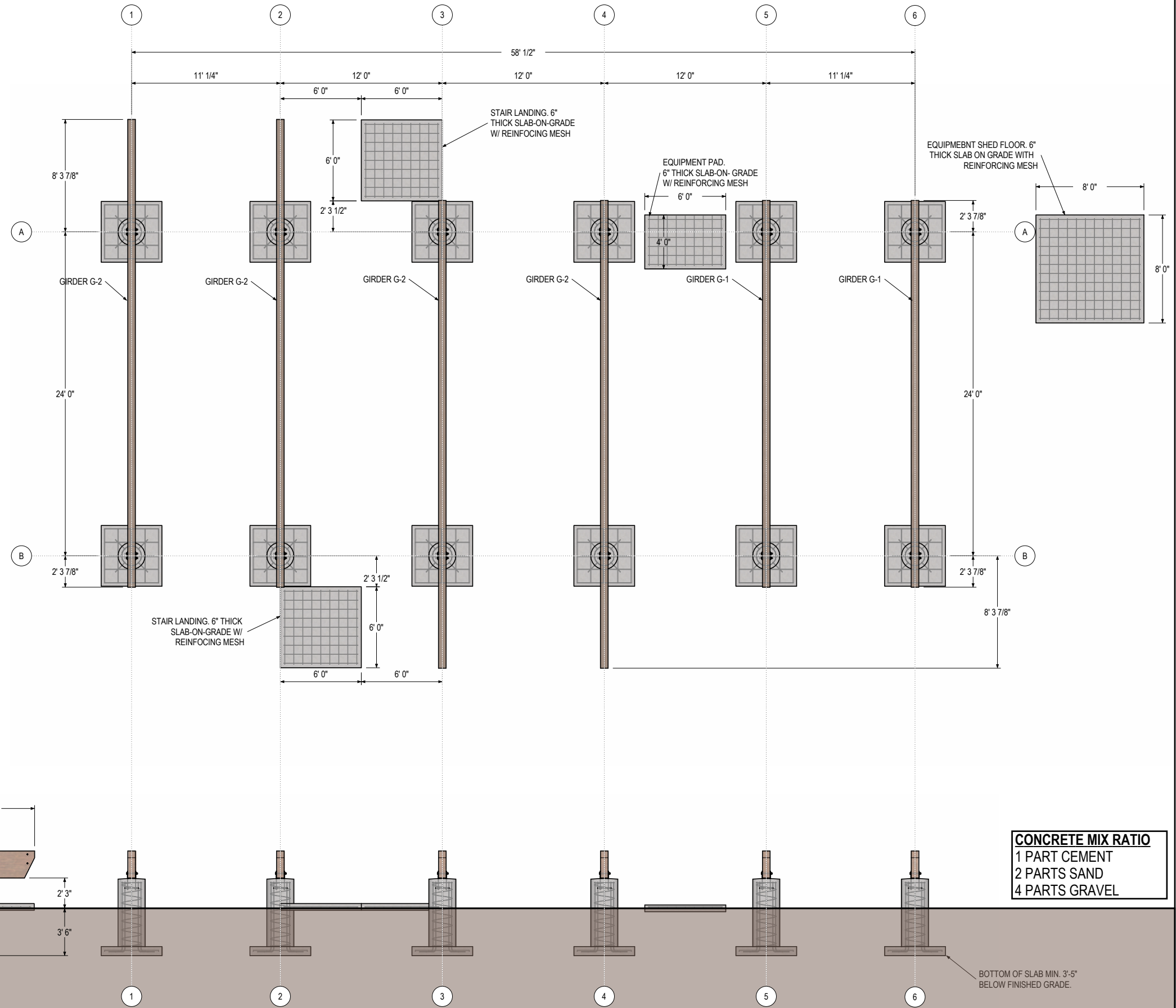
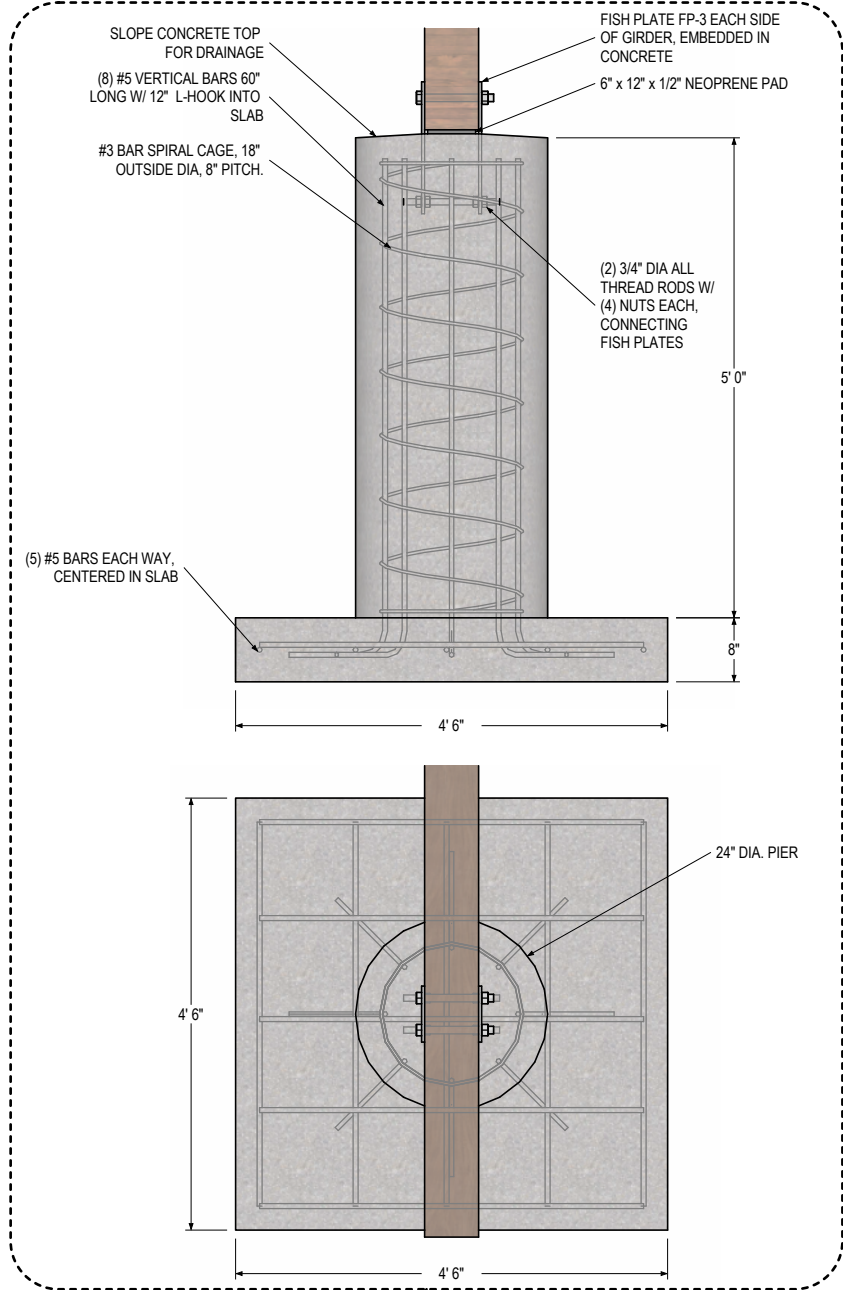
PREPARED FOR:
TINGLEY FAMILY FOUNDATION

TINGLEY FAMILY FOUNDATION LIBRARY
KIA VILLAGE, SOLOMON ISLANDS

REV: 6 MAR 2015
REV: 25 FEB 2016
REV: 20 OCT 2016 - ISSUED FOR CONSTRUCTION
REV:
REV:
REV:
DRAWN BY: CAL DATE: 27 JAN 2015

SECTION

DRAWING #
1.8
SHEET #
12 OF 26
PROJECT #8514



CONCRETE MIX RATIO
 1 PART CEMENT
 2 PARTS SAND
 4 PARTS GRAVEL



DAN TINGLEY
 MIEAust CPEng
 #4001959

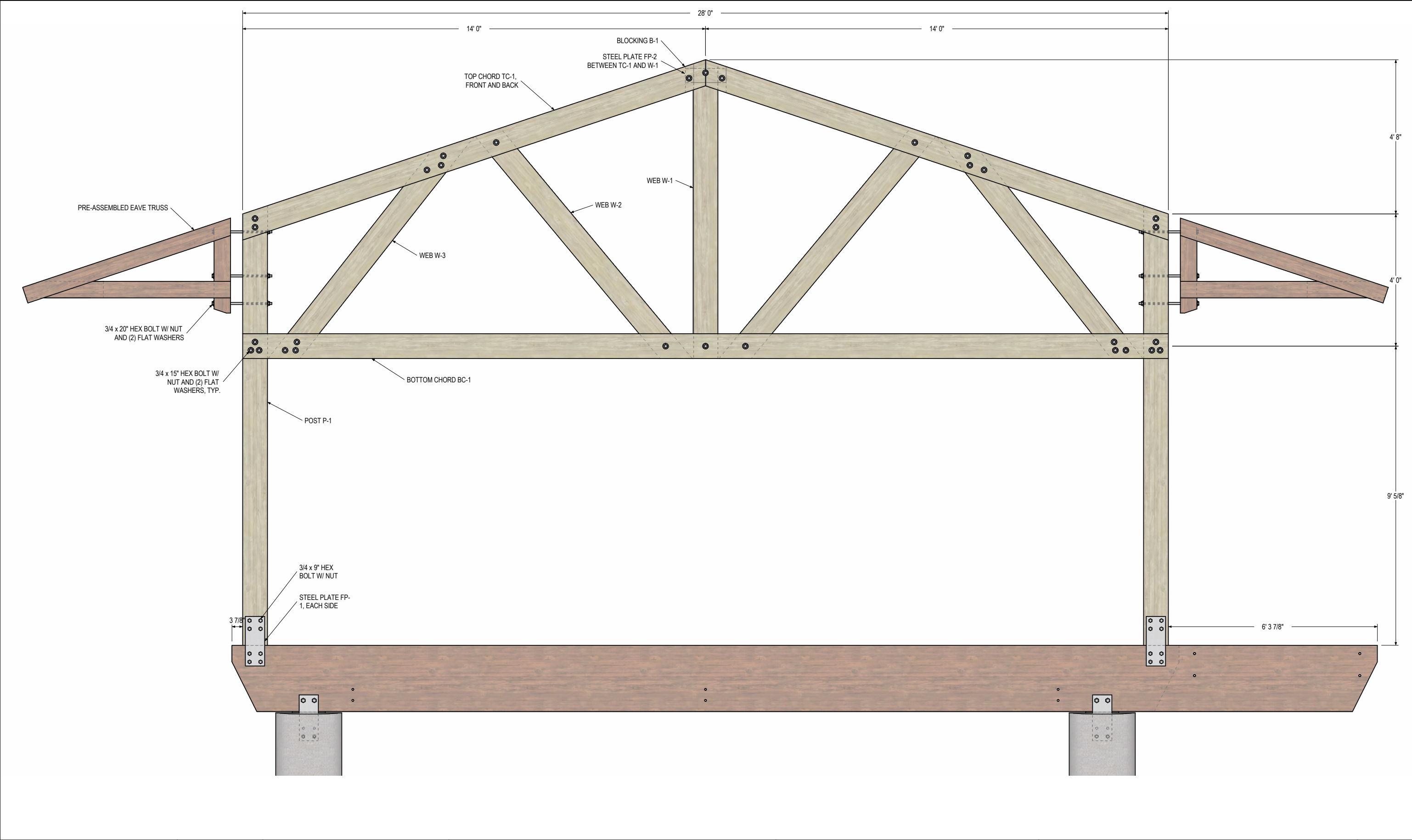
PREPARED FOR:
 TINGLEY FAMILY FOUNDATION

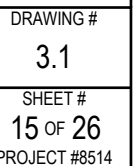
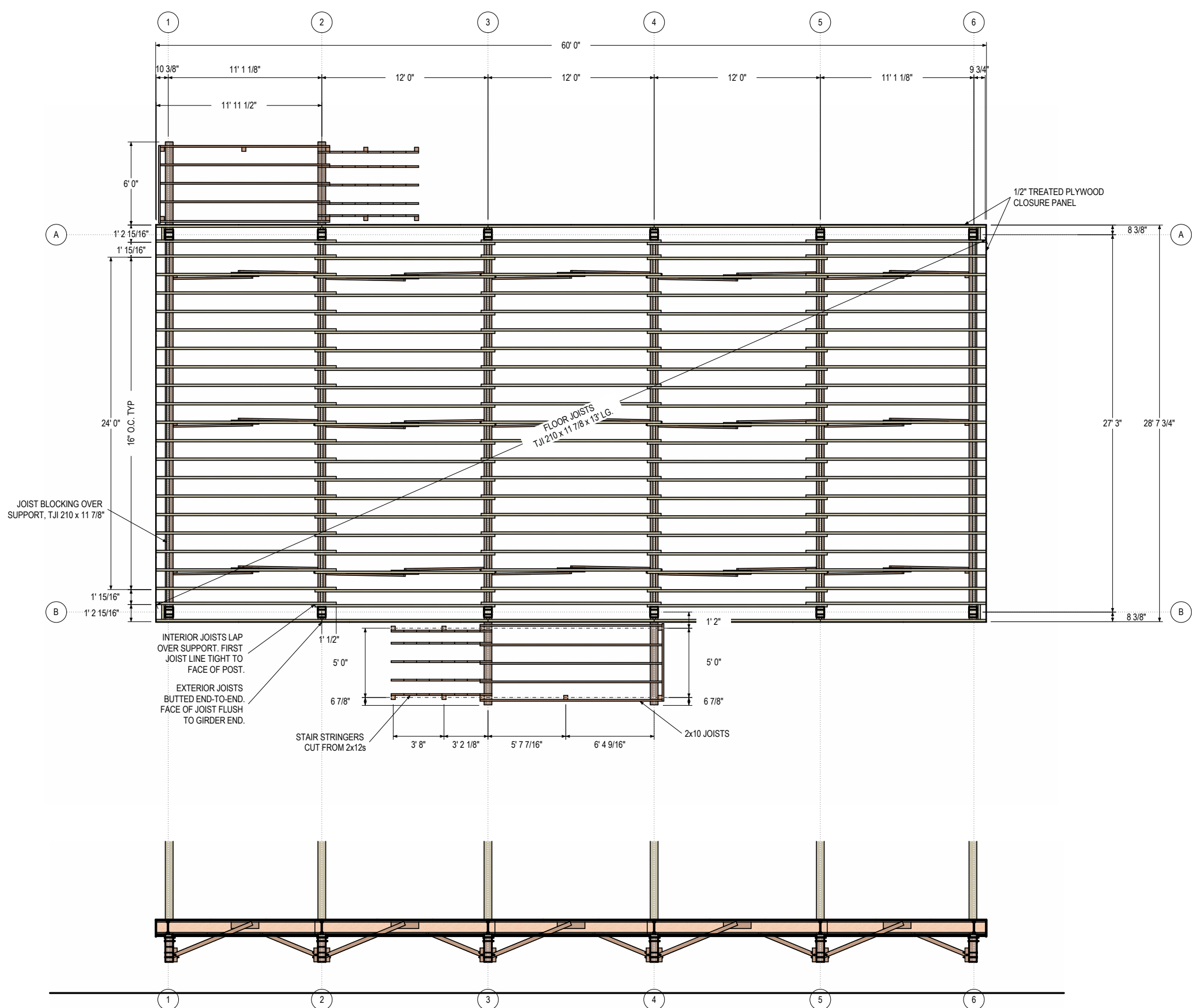
TINGLEY FAMILY FOUNDATION LIBRARY
 KIA VILLAGE, SOLOMON ISLANDS

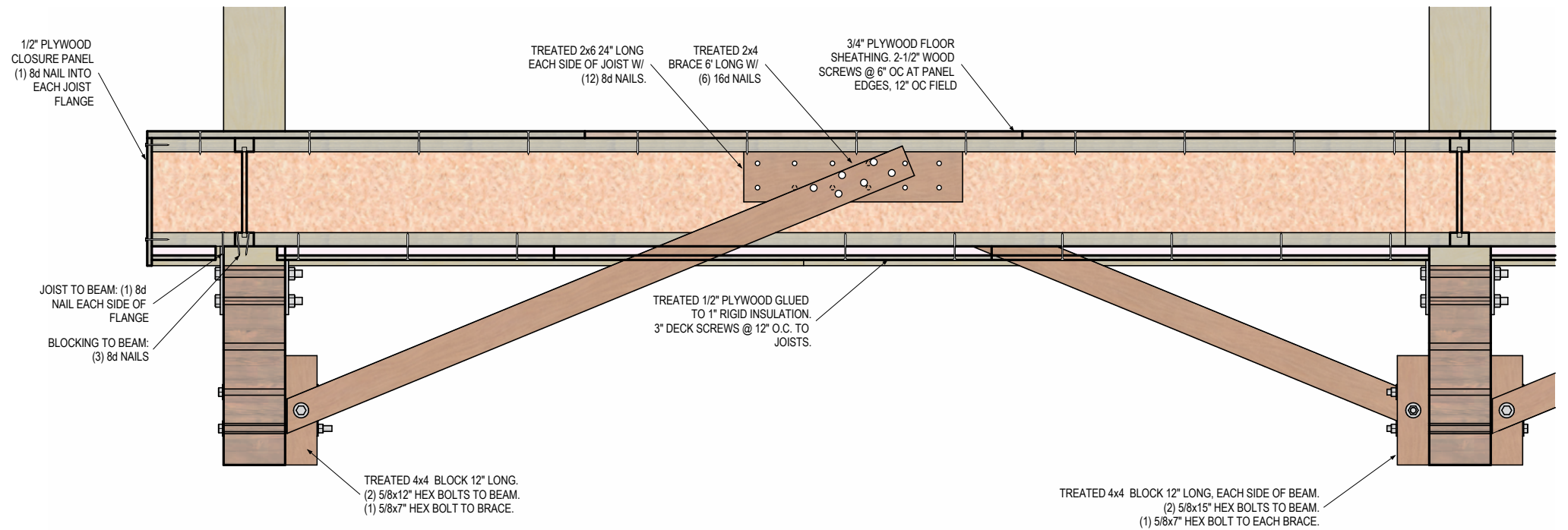
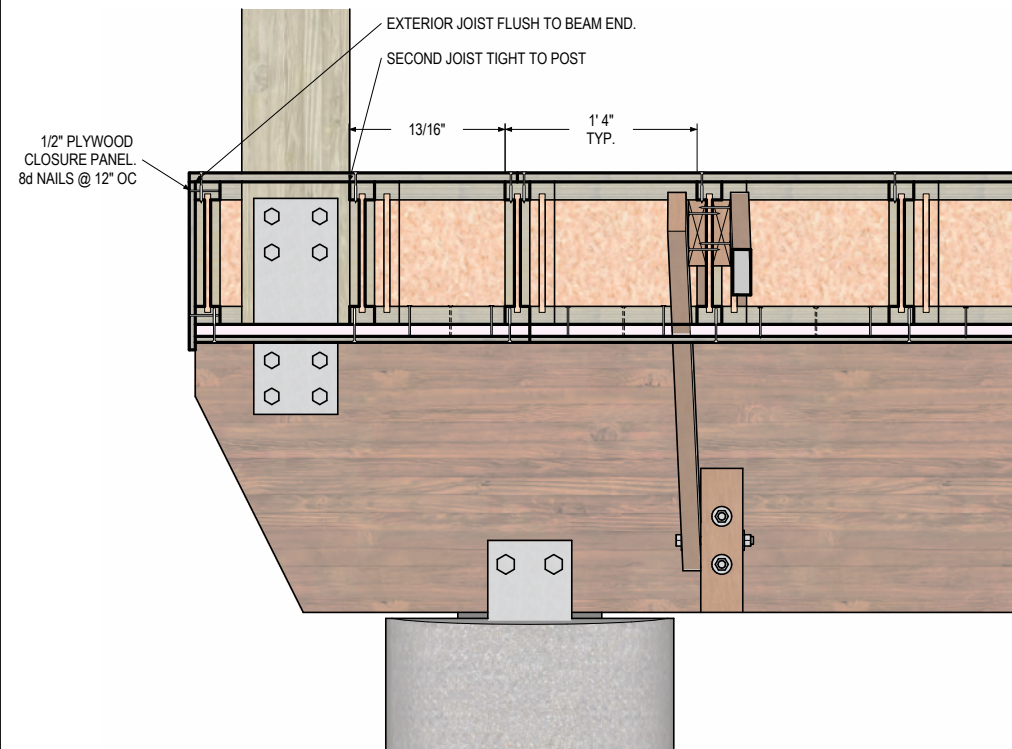
| | |
|--|-------------------|
| REV: 6 MAR 2015 | |
| REV: 25 FEB 2016 | |
| REV: 20 OCT 2016 - ISSUED FOR CONSTRUCTION | |
| REV: | |
| REV: | |
| REV: | |
| DRAWN BY: CAL | DATE: 27 JAN 2015 |

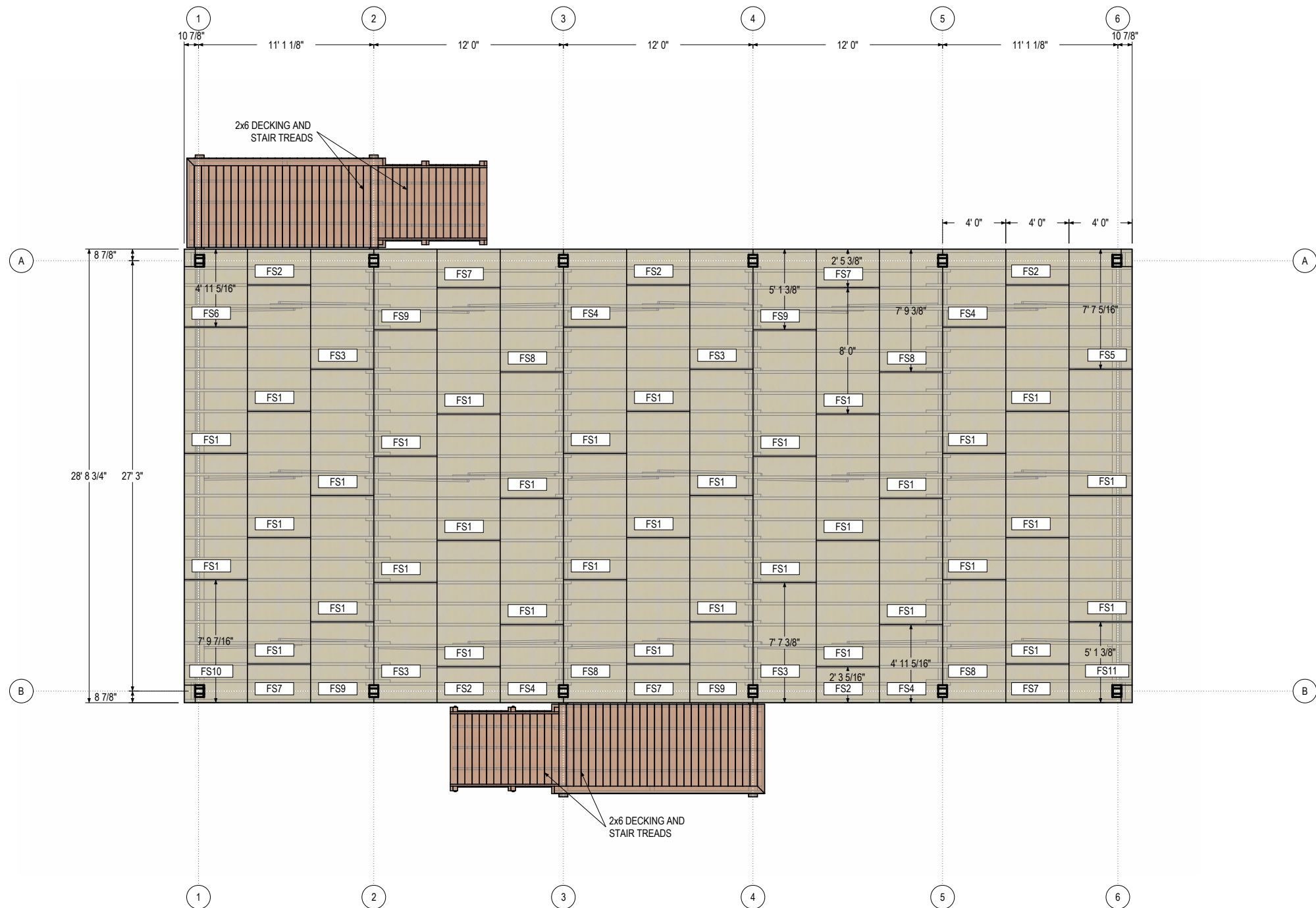
FOUNDATION

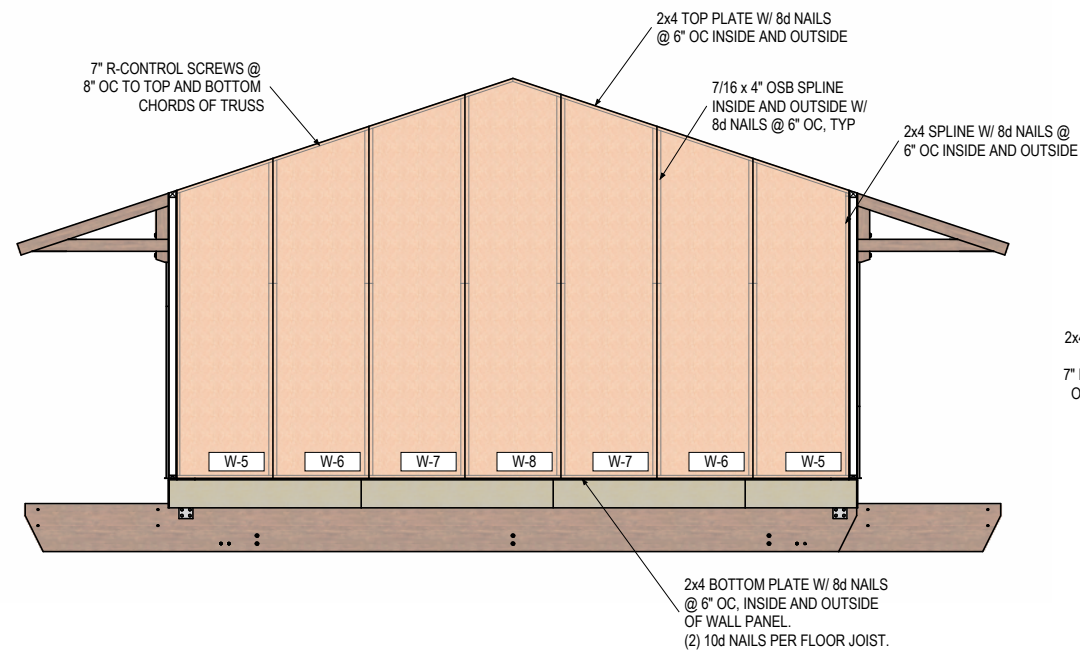
| | |
|-----------|----------|
| DRAWING # | 2.0 |
| SHEET # | 13 of 26 |
| PROJECT # | #8514 |



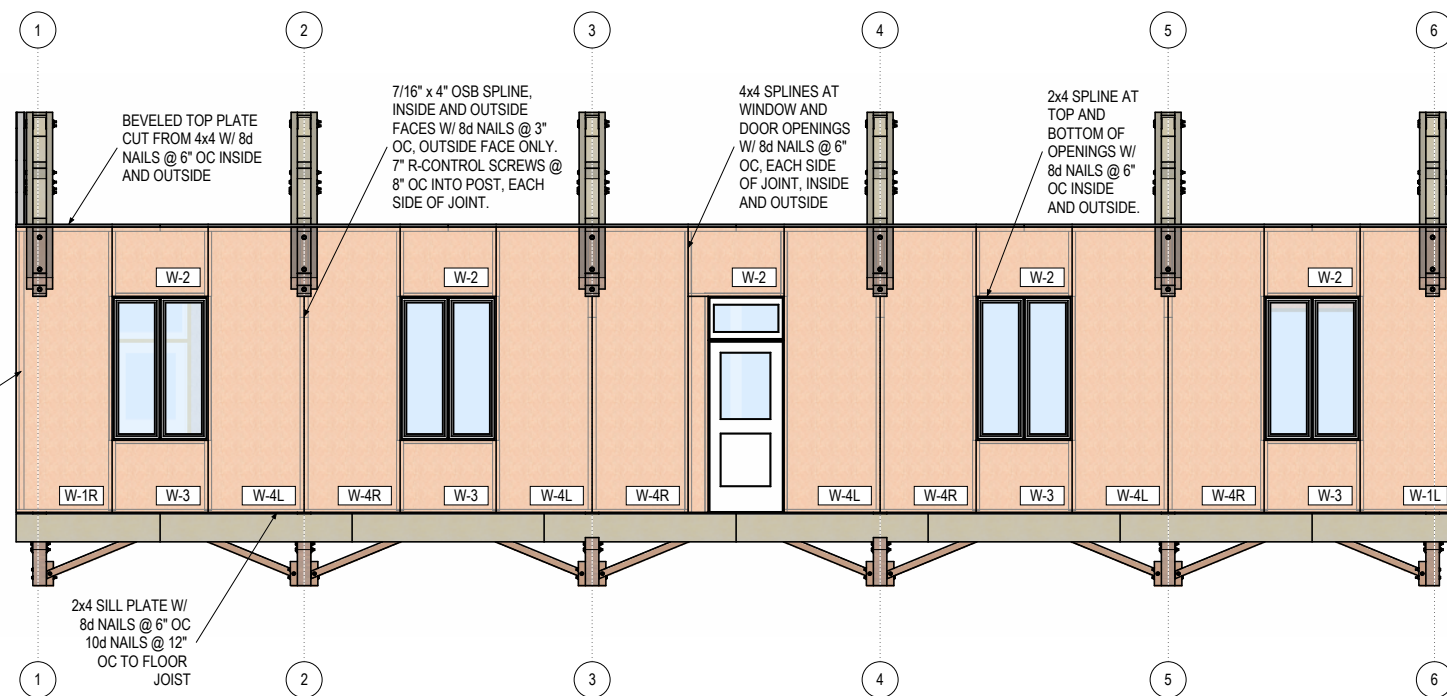




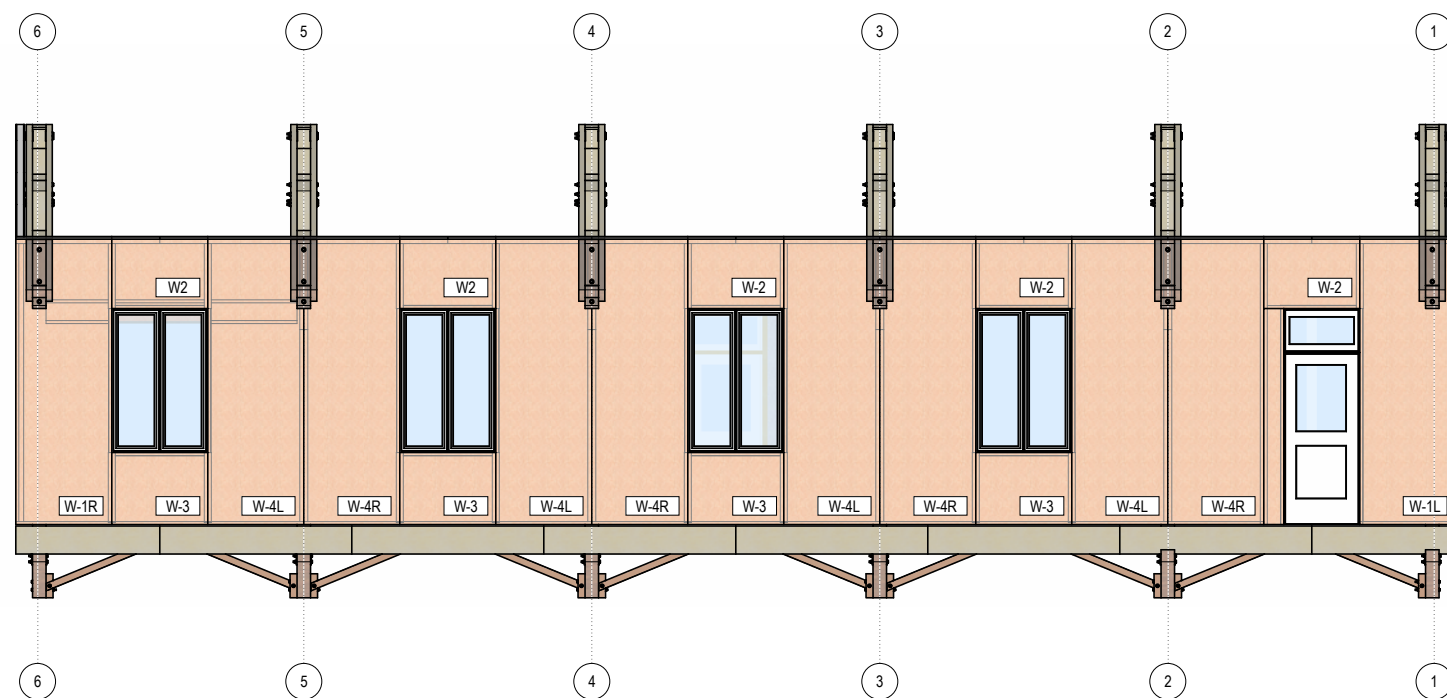




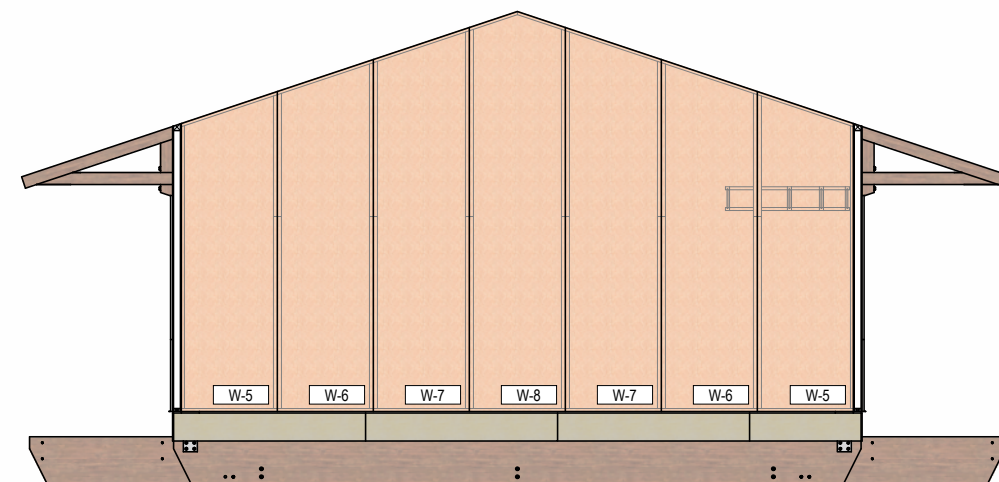
WALL PANELS - EAST
1/8" = 1'-0"



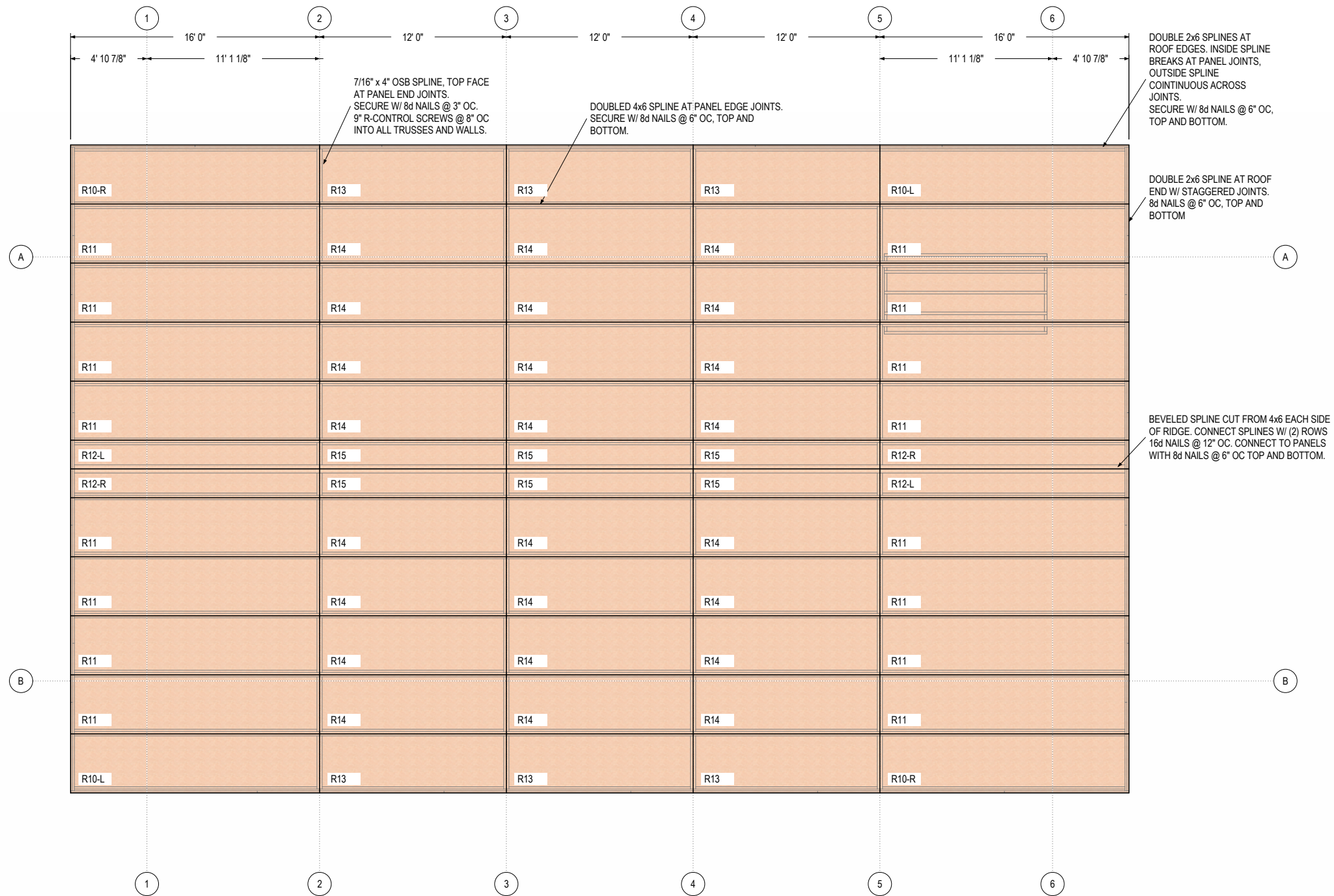
WALL PANELS - NORTH
1/8" = 1'-0"



WALL PANELS - SOUTH
1/8" = 1'-0"



WALL PANELS - WEST
1/8" = 1'-0"



DAN TINGLEY
MIEAust CPEng
#4001959
Dan Tingley

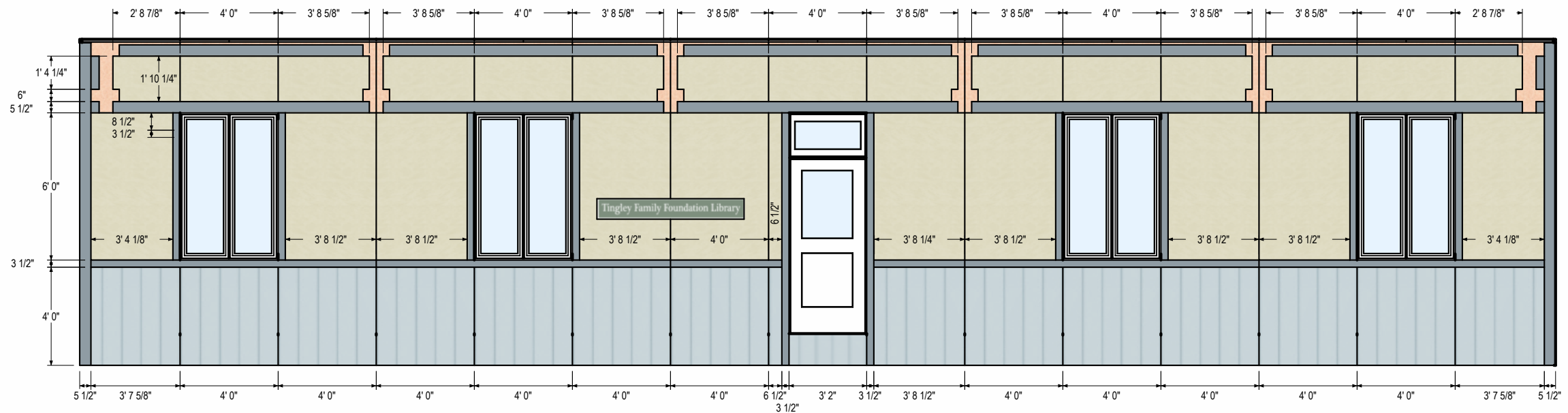
PREPARED FOR:
TINGLEY FAMILY FOUNDATION

TINGLEY FAMILY FOUNDATION LIBRARY KIA VILLAGE, SOLOMON ISLANDS

| | |
|--|-------------------|
| REV: 6 MAR 2015 | |
| REV: 25 FEB 2016 | |
| REV: 20 OCT 2016 - ISSUED FOR CONSTRUCTION | |
| REV: | |
| REV: | |
| REV: | |
| DRAWN BY: CAL | DATE: 27 JAN 2015 |

ROOF PANELS

| | |
|-----------|----------|
| DRAWING # | 4.1 |
| SHEET # | 19 OF 26 |
| PROJECT # | #8514 |



FRONT SIDING

3/16" = 1'-0"



DAN TINGLEY
MIEAust CPEng
#4001959

Dan Tingley

PREPARED FOR:
TINGLEY FAMILY FOUNDATION

TINGLEY FAMILY FOUNDATION LIBRARY
KIA VILLAGE, SOLOMON ISLANDS

REV: 6 MAR 2015
REV: 25 FEB 2016
REV: 20 OCT 2016 - ISSUED FOR CONSTRUCTION
REV:
REV:
REV:
DRAWN BY: CAL DATE: 27 JAN 2015

SIDING ELEVATION

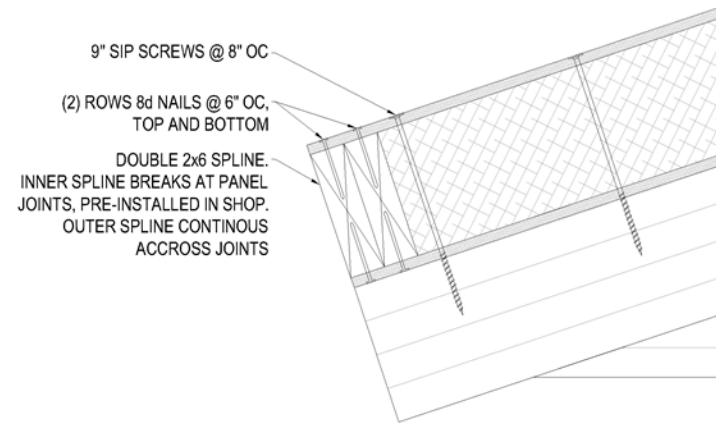
DRAWING #

4.2

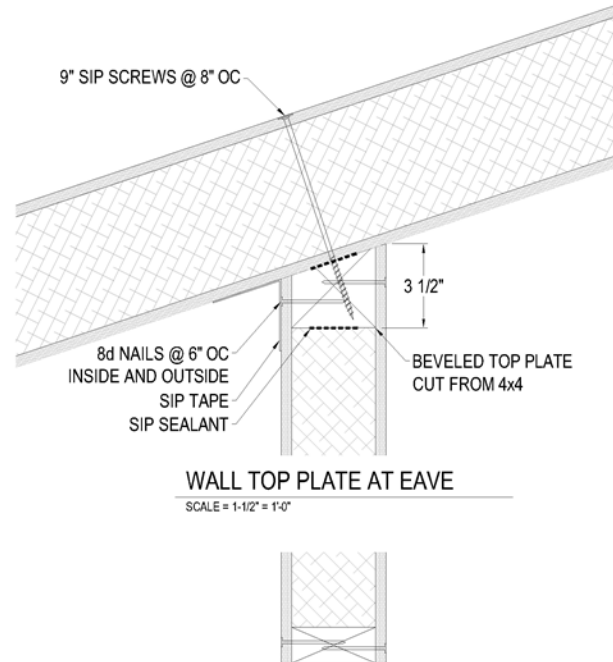
SHEET #

20 OF 26

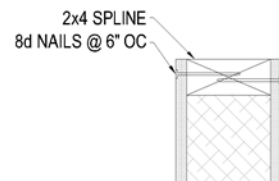
PROJECT #8514



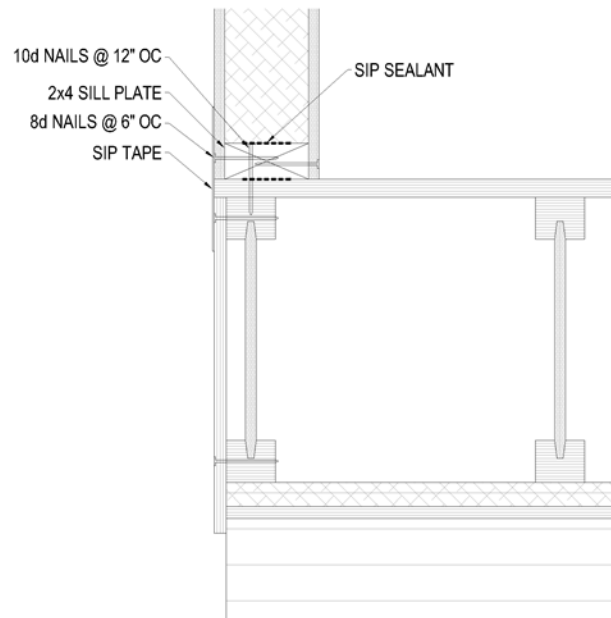
ROOF EDGE AT EAVE
SCALE = 1-1/2" = 1'-0"



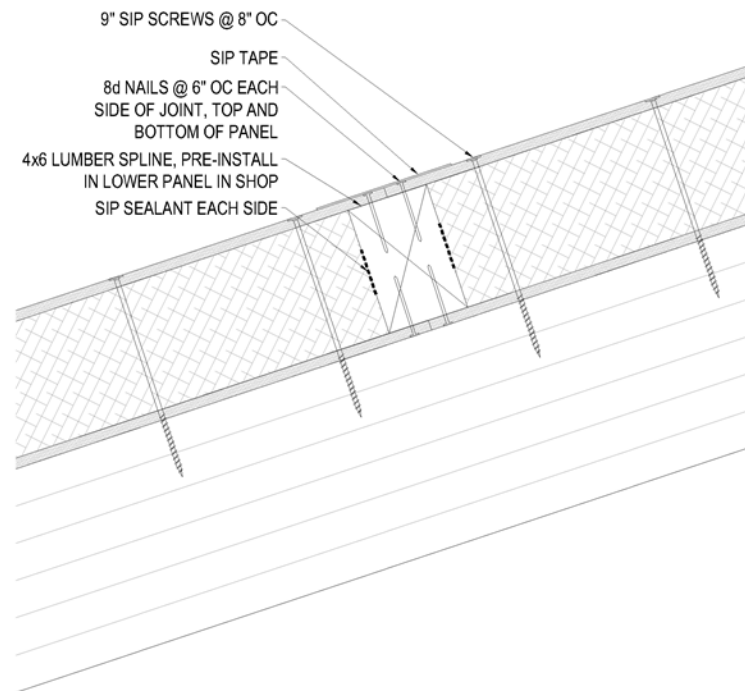
WALL TOP PLATE AT EAVE
SCALE = 1-1/2" = 1'-0"



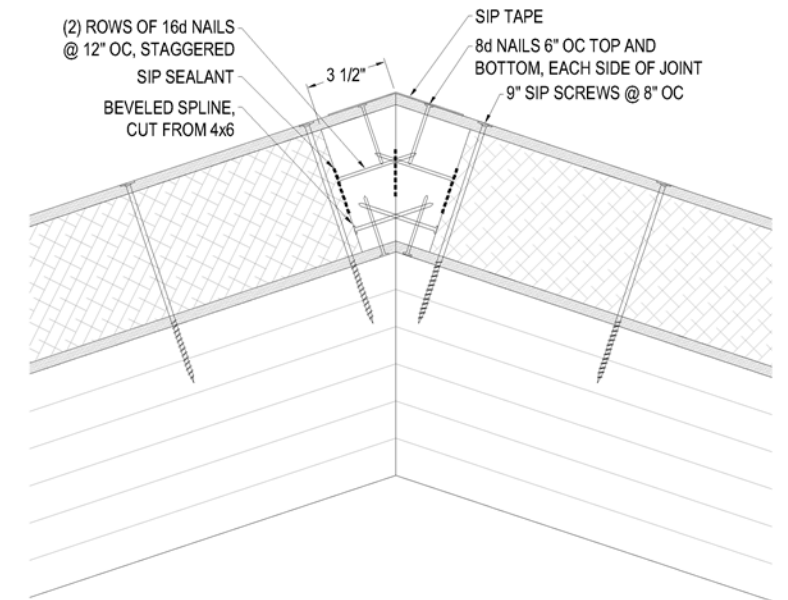
WINDOW HEADER AND SILL
SCALE = 1-1/2" = 1'-0"



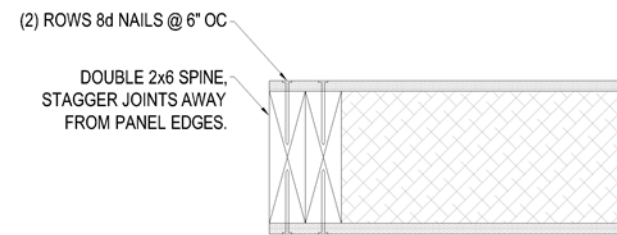
WALL BOTTOM PLATE
SCALE = 1-1/2" = 1'-0"



ROOF SIP LONGITUDINAL JOINT
SCALE = 1-1/2" = 1'-0"

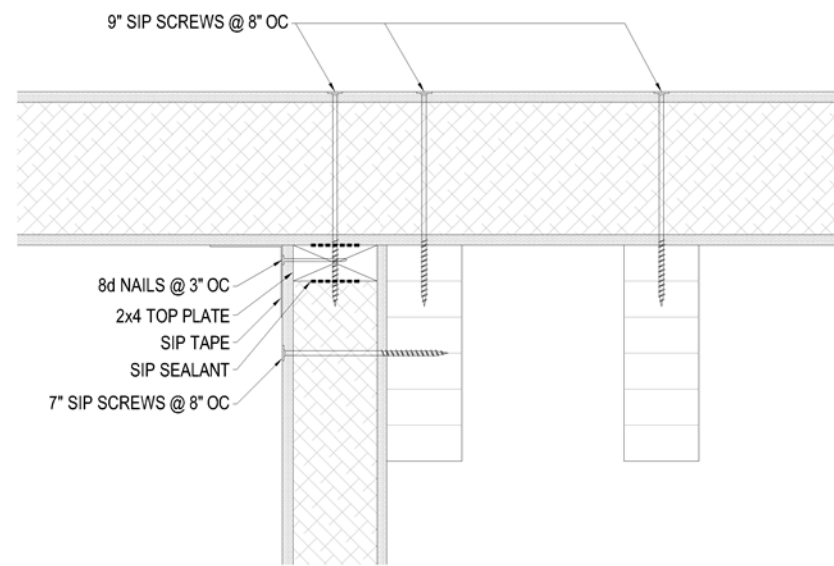


ROOF SIP RIDGE JOINT
SCALE = 1-1/2" = 1'-0"



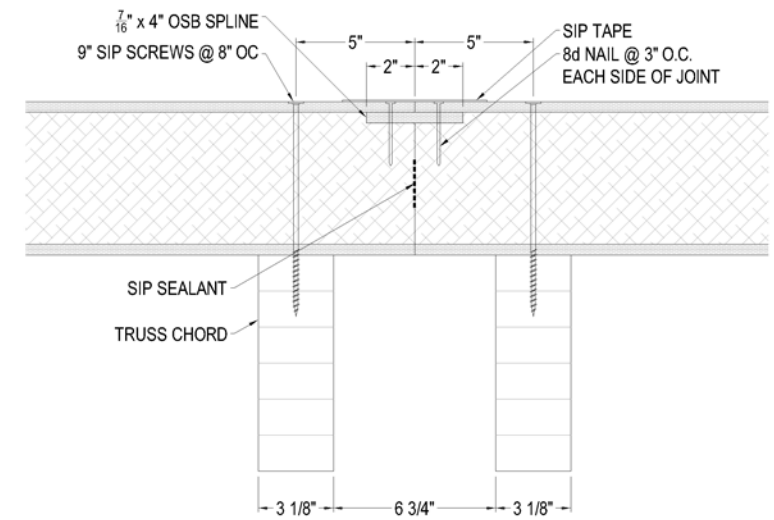
ROOF EDGE AT GABLE

SCALE = 1-1/2" = 1'-0"



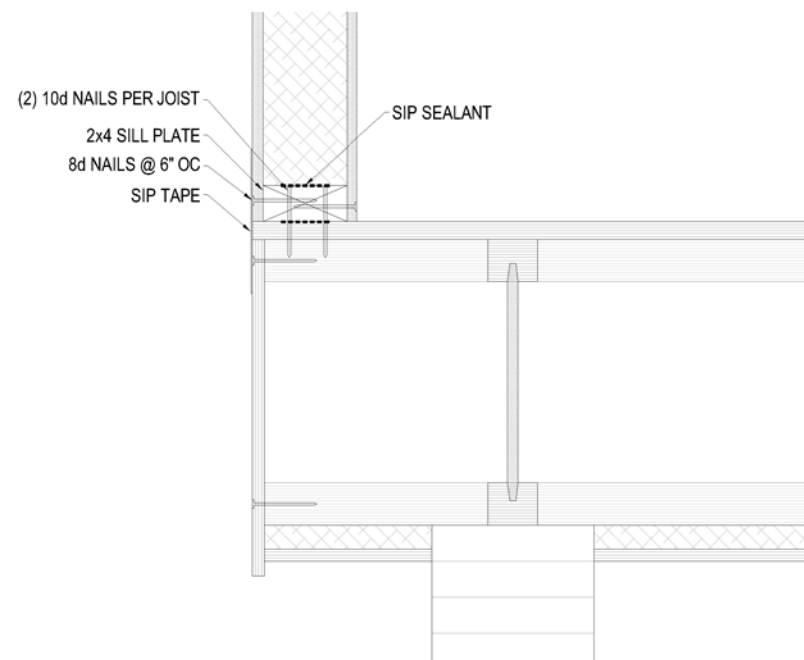
GABLE WALL TOP PLATE

SCALE = 1-1/2" = 1'-0"



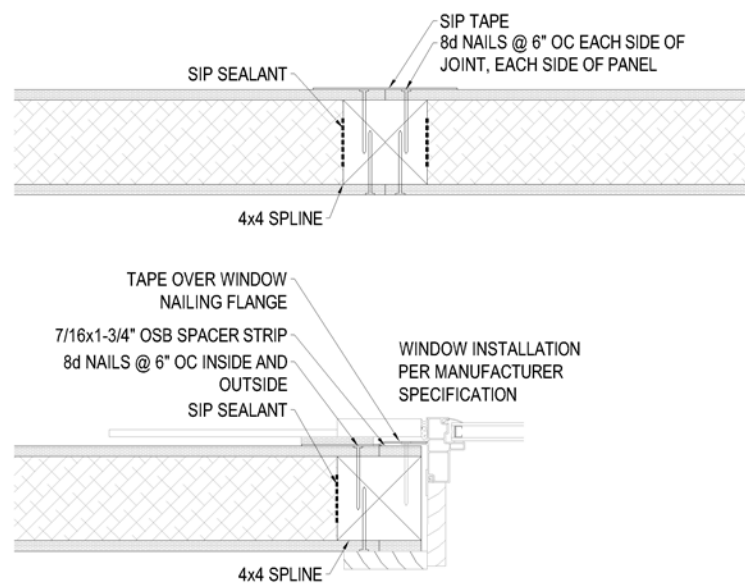
ROOF SIP TRANSVERSE JOINT

SCALE = 1-1/2" = 1'-0"

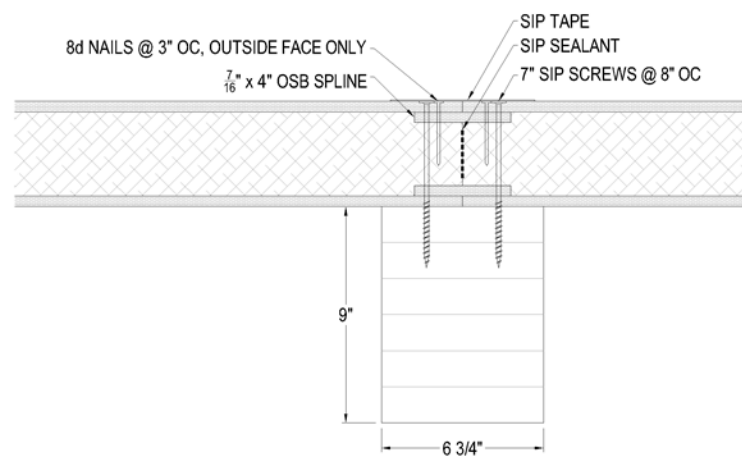


GABLE WALL BOTTOM PLATE

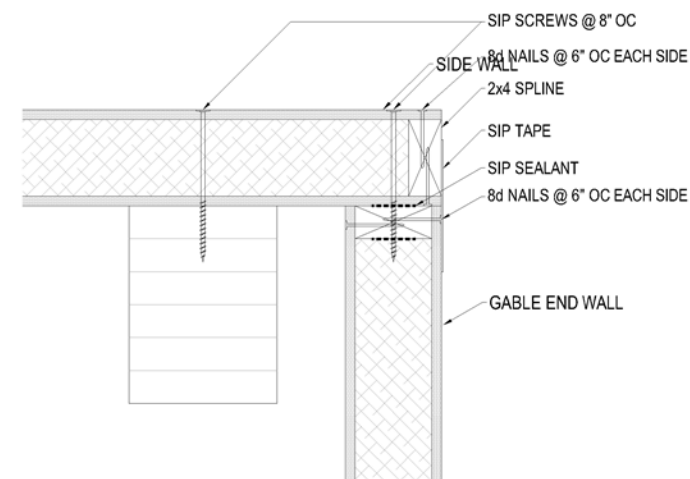
SCALE = 1-1/2" = 1'-0"



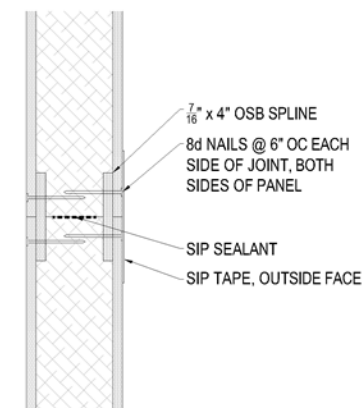
VERTICAL SIP JOINT AT WINDOW/DOOR
SCALE = 1-1/2" = 1'-0"



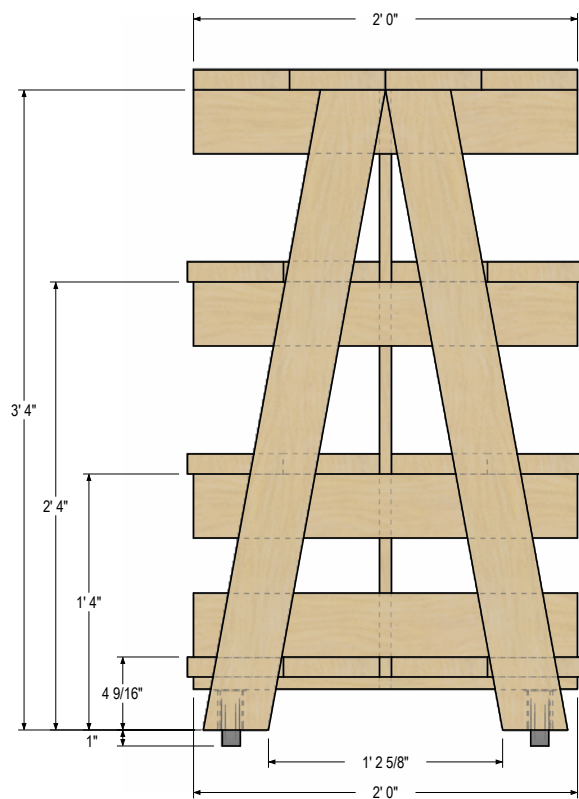
VERTICAL SIP JOINT AT POST
SCALE = 1-1/2" = 1'-0"



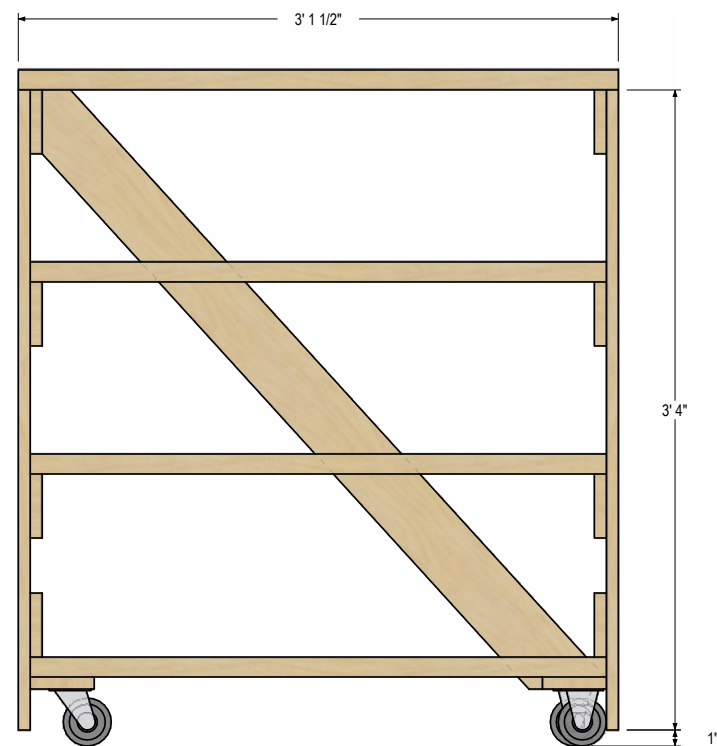
WALL SIP CORNER JOINT
SCALE = 1-1/2" = 1'-0"



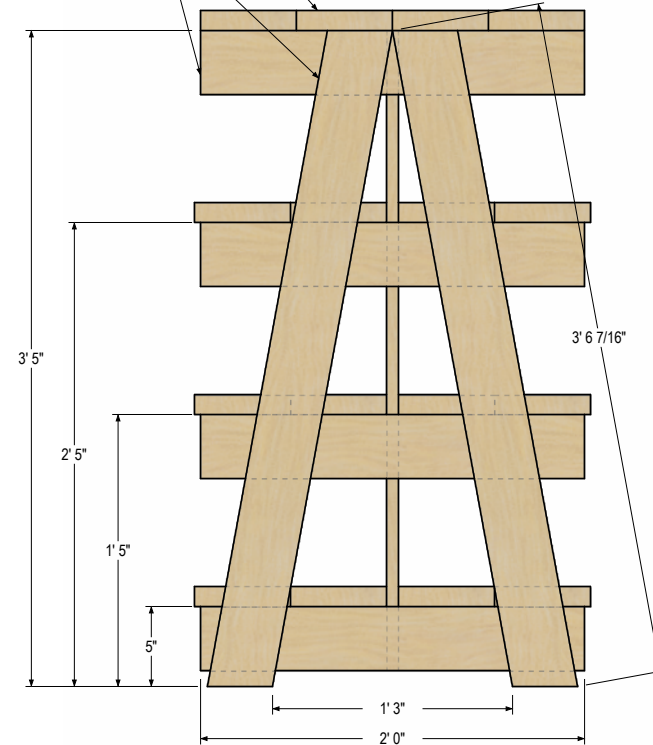
VERTICAL SIP JOINT AT GABLE WALL
SCALE = 1-1/2" = 1'-0"



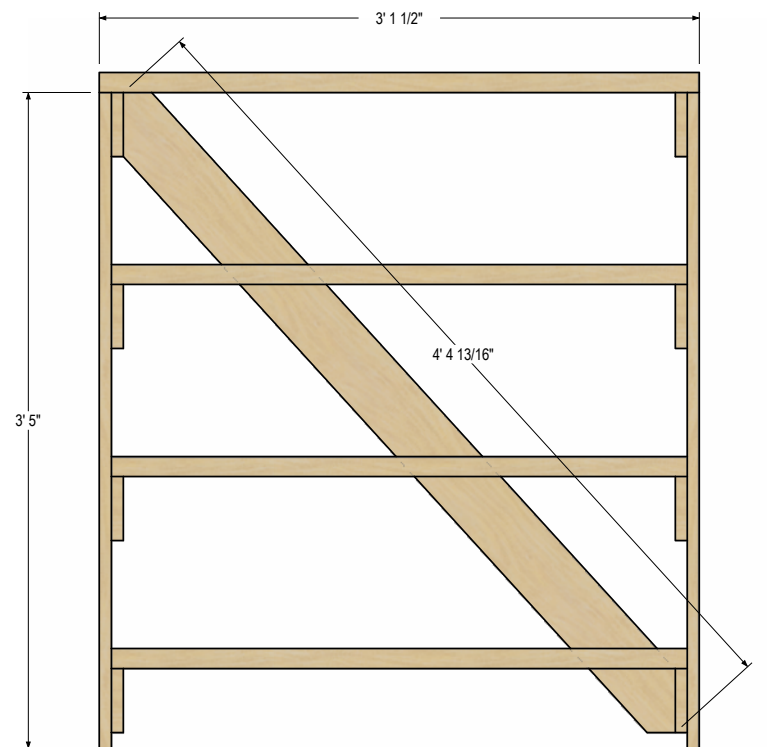
BOOKSHELF 3x2 - MOBILE
1" = 1'-0" QTY: 2

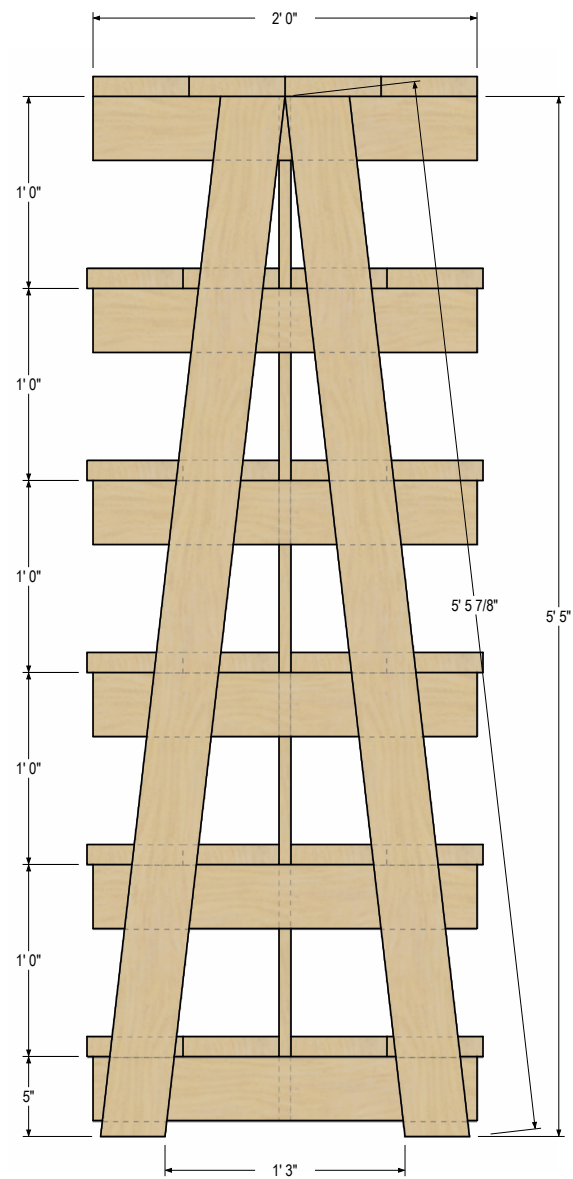


32x140mm VITEX HARDWOOD SHELVES
19x90mm VITEX HARDWOOD LEGS,
SHELF SUPPORTS AND BRACES



BOOKSHELF 3x2
1" = 1'-0" QTY: 12

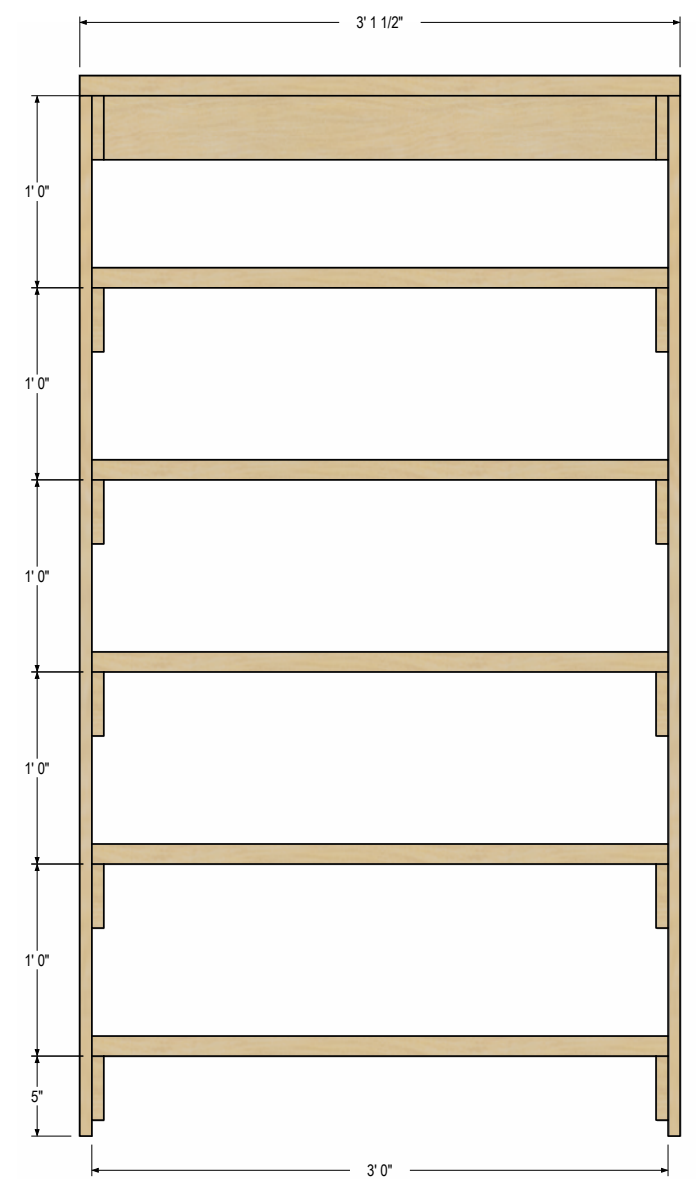
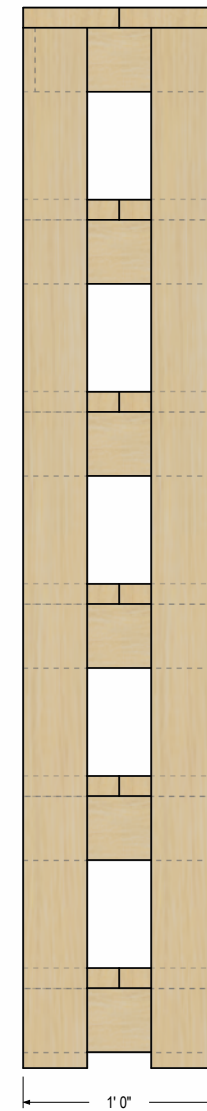
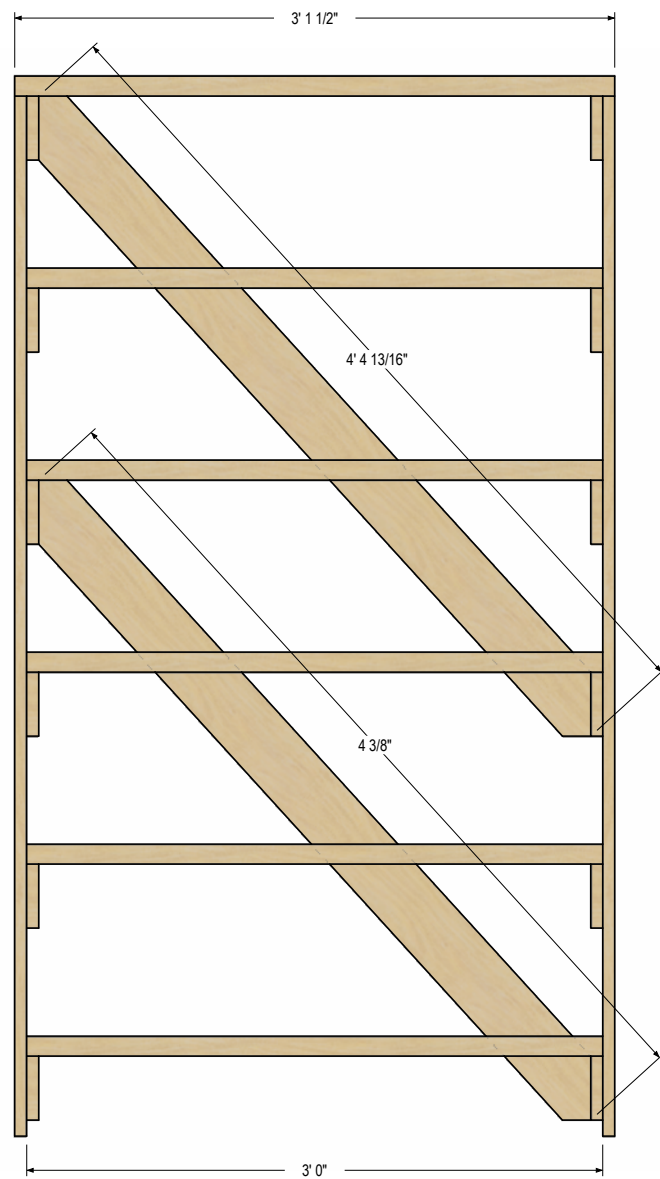




BOOKSHELF 5x2

1" = 1'-0"

QTY: 5



BOOKSHELF 5x1

1" = 1'-0"

QTY: 5



DAN TINGLEY
MIEAust CPEng
#4001959
Dan Tingley

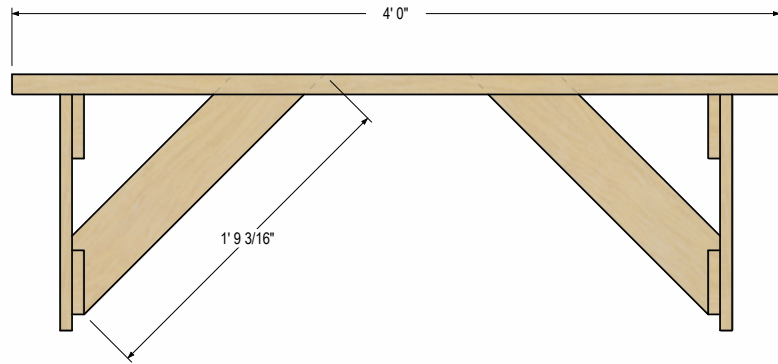
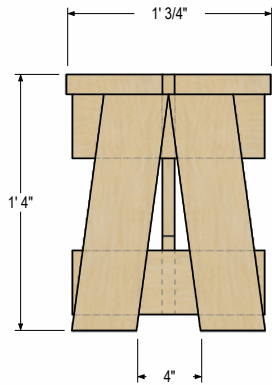
PREPARED FOR:
TINGLEY FAMILY FOUNDATION

TINGLEY FAMILY FOUNDATION LIBRARY
KIA VILLAGE, SOLOMON ISLANDS

REV: 6 MAR 2015
REV: 25 FEB 2016
REV: 20 OCT 2016 - ISSUED FOR CONSTRUCTION
REV:
REV:
REV:
DRAWN BY: CAL DATE: 27 JAN 2015

BOOKSHELVES

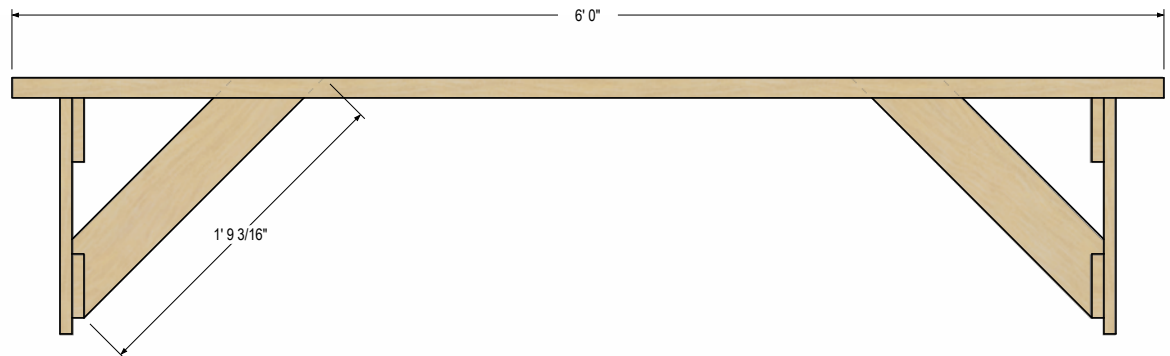
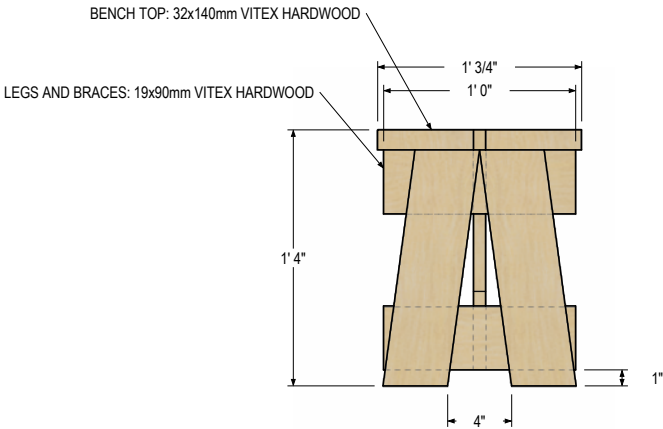
DRAWING #
5.1
SHEET #
25 OF 26
PROJECT #8514



BENCH - 6'

1" = 1'-0"

QTY: 4



BENCH - 6'

1" = 1'-0"

QTY: 28